

2020-2021  
Annual Report



**Striving for Excellence**  
in Pediatric Palliative Care and Supporting  
Families with Compassion

**Providing care and services for children who require pediatric palliative care throughout their lives and offering their families support, respite and comfort during the grieving process.**



# Governance and Senior Management

---

The Lighthouse, Children and Families team has been supporting families during both very trying times and joyous moments since 1999. While this year was impacted by an unprecedented global health crisis, The Lighthouse was able to face the situation head on and continue offering quality services to families. Our team was committed to helping improve the well-being of children and their families. We would like to thank our interdisciplinary team and healthcare partners for their continued support throughout the year in helping us to fully carry out our mission.

The health crisis gave us the opportunity to strengthen our care protocols in order to support vulnerable families in the safest environment possible. Overcoming these challenges has allowed us to continue striving for excellence in our pediatric palliative care practices.

During these hard times, we were able to rely on the kindness and generosity of our community: loyal supporters and new donors allowed The Lighthouse to raise over 3 million dollars. This enormous act of generosity has touched our hearts and given us hope for the future of The Lighthouse and pediatric palliative care.

We would like to thank you from the bottom of our hearts for your commitment and generosity that makes all the difference in the lives of the families we work with.

A handwritten signature in black ink, appearing to read 'François'.

**François Gratton**  
Chairman of the Board

A handwritten signature in black ink, appearing to read 'Lyne St-Martin'.

**Lyne St-Martin**  
Chief Executive Director

# The Lighthouse's pediatric palliative care services support families wholeheartedly through very difficult situations.

This year, affected by the Covid-19 pandemic, brought to light the dedication of The Lighthouse's interdisciplinary team and volunteers who provided quality pediatric palliative care with exemplary health measures in place. We continued to support children and their families from their initial diagnosis, throughout the development of their illness, up until the end of their life, then throughout the grieving process.

"For me, The Lighthouse is like a pot of gold at the end of the rainbow. It's the first thing that comes to mind. For us, The Lighthouse is a place where we have everything we need. It's a centre filled with love and medical professionals that have the expertise to take care of the world's most fragile children. As parents, being surrounded by nurses and healthcare professionals is really comforting. - Graham Baxter, Éloïse Baxter's father

**"The Lighthouse is a constant presence in our lives. I can't imagine our lives without their services."**

- Graham Baxter, Éloïse Baxter's father







“Everybody knows Enzo here. He knows the voices of everyone who works with him. As I go down the hallway, I can hear everyone saying hi to Enzo. They know his habits. They know if he gets up early, they can make him laugh easily. They know his needs. I can tell from his reaction that he’s happy to hear everyone. When we arrive, he laughs as soon as we go through the door. I think, for him, it’s really like a second home, a second family. If Enzo could talk, I think he would say that it’s a place where he can do fun activities and he would tell us about zootherapy, the pool, about that time when he used his hands to draw with Mr. Vaillancourt. He would say that nurse makes him laugh, that person goes for walks with him outside...” - Benoît Racine, Enzo’s father

# Overview of the Children and Families :

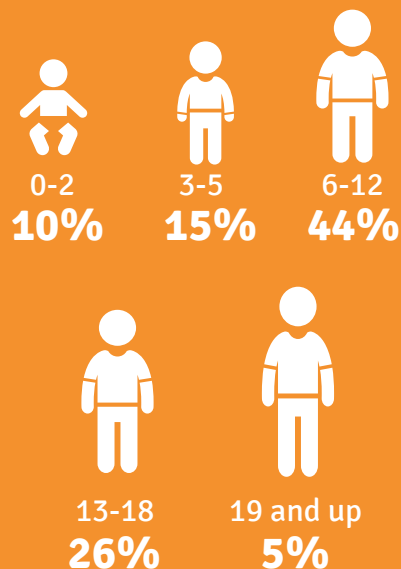


## Services in Numbers :

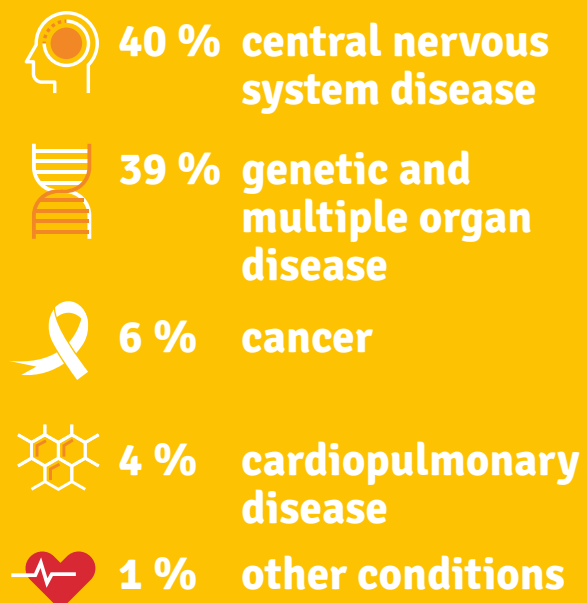
### SOURCE OF REFERRALS

- 54% pediatric hospitals
- 14% CISSS/CIUSSS
- 13% Rehabilitation centre
- 12% Families
- 7% other organizations

### BREAKDOWN BY AGE GROUP



### CHILDREN'S MAIN DIAGNOSES



**156**  
children cared for

**11**  
regions  
covered where  
families  
reside



# Services in Numbers :

**LARGE  
INCREASE  
DESPITE THE  
PANDEMIC  
IN STAYS**

Symptom management  
and end-of-life care

**14% vs 3%**  
in 2019-20

Transition, first  
24 hrs and psychosocial  
emergencies

**6% vs 3%**  
in 2019-20



**33**  
new  
admissions



**82%**  
Occupation rate\*

\* Without cancellations. Compared to 78% in 2020



**2 924** stays (occupied  
rooms)  
**3 555** available stays

## BREAKDOWN OF STAYS (NIGHTS)

**2328**  
respite  
care

**421**  
symptom  
management and  
end-of-life care

**175**  
transition, first  
24 hrs and  
psychosocial  
emergencies

Psychosocial support  
**432 hours**  
7 workshops  
for families

**324 hr**  
in-home respite services

**144 hr**  
in-home volunteer  
respite services

## ACTIVITIES

recreational  
**2703 hr**



artistic  
**353 hr**



therapeutic  
**803 hr**



Family liaison,  
interaction  
and support :  
**275 hr**

**3 654**  
meals served

# Benevolent and Dedicated

## VOLUNTEERS AND INTERDISCIPLINARY

The Lighthouse relies on volunteers and an interdisciplinary team known for their commitment, benevolence, respect, dignity and professionalism.

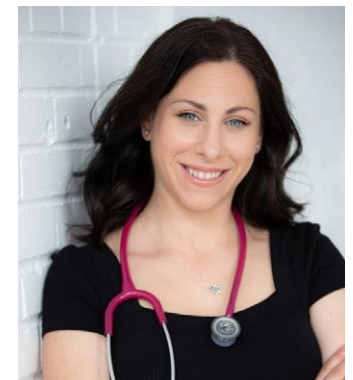


## DR. SILVANA BARONE'S EXPERTISE AT THE LIGHTHOUSE

On February 2021, pediatrician Dr. Silvana Barone became Medical Director of The Lighthouse.

"Palliative care for children is still unfamiliar territory for many people."  
- Dr. Silvana Barone

Pediatrician at the CHU Sainte-Justine since 2018, Dr. Silvana Barone did a clinical fellowship in pediatric palliative care from 2016 to 2018 and a postdoctoral fellowship in bioethics at the prestigious Johns Hopkins University in the United States. She also collaborates with the faculties of medicine at the University of Montreal and McGill University, in addition to having published numerous scientific articles over the past 15 years, particularly about children with chronic illnesses and pediatric deaths.





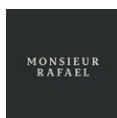
# COMMITTED COMMUNITY

Community support and collaboration are essential links in the chain of solidarity and support for the children and their families. The Lighthouse relies on a benevolent community, committed donors, generous partners, local regional associations and the mobilization of its neighbours.

**\$143,000**  
**1310 donors**  
supported **273 people**  
who took part in My Birthday  
as a Gift

Thanks to our partners, Offrez Le  
Phare en cadeau à Noël raised  
more than

**\$15,000.**



Michaud  
sans retenue

BÔSAPIN  
Noël à votre portée

## UNIS POUR LE PHARE FUNDRAISING CAMPAIGN

The community's joint efforts allowed  
The Lighthouse to raise a total of

**\$150,000** at  
**55 fundraisers** and from  
**1020 individual donors**

## INSPIRATIONAL FUNDRAISING STORIES

### WALK FROM QUEBEC CITY TO MONTREAL, ORGANIZED BY MICHAEL LAVOIE

For the second edition of the Quebec City to Montreal Walk, which was a 250 km walk over 6 days on the Chemin du Roy last September, Michael Lavoie surpassed his goal and raised \$26,526. He was thrilled to have twenty some odd walkers join him, which is very encouraging since he aims to increase that number every year.

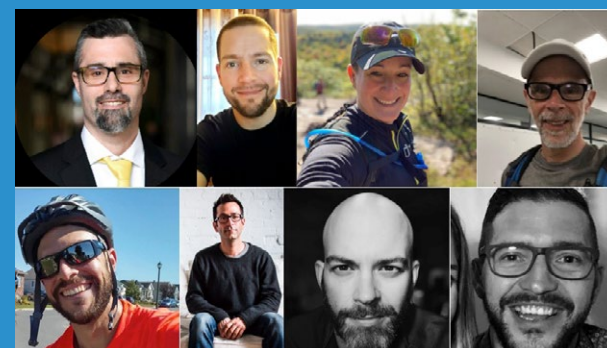


Photo of the arrival at The Lighthouse, Sept. 7, 2020 Walk  
Photo credit: Dominic Noël

### A LIGHTHOUSE AT THE TOP OF EVEREST

On December 27, 2020, 11 Quebecers undertook the "Everesting" challenge, which consisted of climbing the equivalent of Mont Everest (8,849 metres) in one single virtual bike outing on the Zwift platform, which raised \$8,040.

"This difficult challenge, both mentally and physically, became a tribute to Noah, who through his courage and his story gave each and every one of us the strength to complete this challenge." - The Everesting team for Noah



# Major Donors

## A DONATION THAT WILL MARK THE FUTURE OF THE LIGHTHOUSE

In 2020, the Fortin family experienced a great loss, the death of their mother, Francine. To honour her memory, Mr. Pierre Fortin decided to make an extraordinary donation of \$500,000 to The Lighthouse, Children and Families.

“Francine and I always believed in going through the grieving process with just family and close relatives. The pandemic delayed our plan for spreading the ashes. I feel that my donation to The Lighthouse, and the plaque dedicated in Francine’s memory, will give my children their mother’s legacy to hold on to.

Francine had a severely disabled sister who she took care of all her life and who died 4 years ago. I was really surprised at how my charitable donation generated such peace in a grieving process that had been so difficult.

I hope that my actions will inspire others to support The Lighthouse’s essential mission too.” - Mr Pierre Fortin



## Thank you to our major partners for their invaluable contribution.



Pathy Family Foundation,  
in support of the Fostering  
Memory program



Fondation D'Amours, in support  
of the care mission



The Molson Foundation  
Fondation Molson

The Molson Foundation, in  
support of development of  
excellence

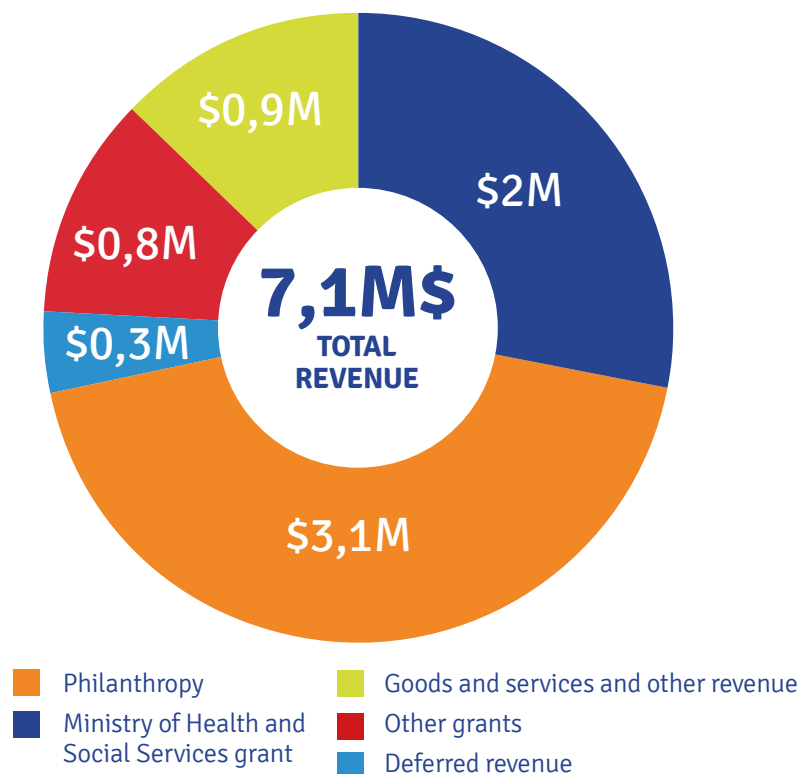


iA Financial Group, in support  
of in-home respite

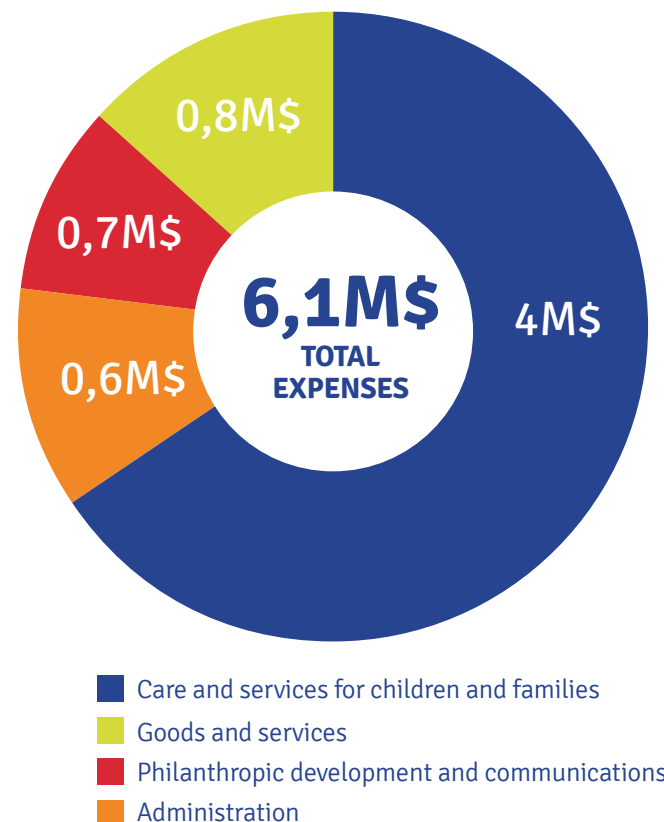
Sophie Desmarais, in support  
of the service mission

# Financial Results

SOURCE OF FUNDING



BREAKDOWN OF EXPENSES



## Members of the Board of Directors on March 31, 2020

### Chairman

François Gratton  
Executive Vice-President and  
President of Business Solutions East  
and Telus Québec

### Vice Chair

Marcel Martin  
Regional Vice President, Quebec and  
Eastern Canada, AGF Investment Inc.

### Treasurer

Viviane Croux  
Vice President – National Accounts,  
TD Commercial Banking

### Secretary

Serge Lalonde  
Legal Counsel, Dentons Canada  
S.E.N.C.R.L.

### Co-founder

Michèle Viau-Chagnon, C.Q.

### Administrateurs

Dr Louis Beaumier  
Assistant Professor – Department  
of Pediatrics – Faculty of Medicine,  
McGill University

Rita Benyahia  
Senior Manager, Finance  
Transformation - Bell Canada

François Charpentier  
Parent Representative

Isabelle Desmarais

Assistant Syndic – Chambre de la Sécurité Financière  
Parent Representative

Dr Marc-Antoine Marquis  
Pediatrician, Pediatric Palliative Care – CHU Sainte-Justine

Dominic Paradis  
Vice-President, Legal Services and Corporate Secretary,  
National Bank of Canada

André Pratte  
Director – Navigator

# Thank You to Our Donors

Thank you to our generous donors for your contribution which makes all the difference in the lives of the children and families of The Lighthouse

**6594** donors

**Total of  
donations: \$3,1 M**

## \$ 100 000 and over

Caisse de bienfaisance des  
employés et retraités du CN  
Fondation Molson  
Fortin, Pierre  
1 anonymous donor

## \$ 50 000 to \$ 99 999

Affinerie CCR, une compagnie Glencore  
Charron, Dan  
Desmarais, Sophie  
Desmarais, Paul Jr  
Goulet, Réal  
Gratton, Robert  
iA Groupe Financier

## \$ 10 000 to \$ 49 999

Altru Foundation inc  
The Anna & Louis Viglione Foundation  
Banque Nationale du Canada  
Beausoleil, Serge  
La Fondation de la Famille Birks  
Canada Life  
Fondation Bourassa Savaria  
Fondation du Grand Montréal  
Fondation J. Armand Bombardier  
Fondation J. A. DeSève  
Fondation J.-Louis Lévesque  
Fondation Lucie et André Chagnon  
Fondation Marcelle et Jean Coutu  
Fondation Marisa  
Fondation Villa-Notre-Dame-De-Grâce

Fournelle, Marie-Annick  
La Fondation Familiale Trottier  
Mike & Valeria Rosenbloom Foundation  
Opération Enfant Soleil  
Power Corporation du Canada  
R. Howard Webster Foundation  
Fondation René Malo  
Banque TD  
Succession de Virna Corriveau  
TELUS  
The Cole Foundation  
3 anonymous donors

## \$ 1 000 to \$ 9 999

Les Aciers Métofab inc  
Ad Hoc Recherche  
Alice and Euphemia Stewart Family Foundation  
Alimentation C.C. Sévigny Inc.  
André Normand inc  
Animago inc  
Anjinov Construction Inc.  
Armoires B & M  
Beaudry, Paul  
Beaudry, Éric  
Beaumier, Louis  
Bélanger, Normand  
Bellefeuille, Patrice  
Ben Shabat, Aaron  
Berthiaume Pneus & Mécanique  
Bilodeau, Marco  
Bisson Expert en Fondation  
Blais, Simon  
Bourassa, Normand  
Boutet, André

Brodeur, Guy  
BT Films  
Bureau Des Infractions Et Amendes,  
Ministère De La Justice  
Café Barista  
Cantin, Odette  
César, Sophia et Stéphane  
Chameleon Innovations  
Champagne, Manon  
Charcuterie Aux Trois Cochons Gourmands  
Charest, Gilles  
Charpentier, André  
Clermont, Micheline  
Clinique dentaire le Sommet  
Cloutier, Guy  
Club Lions de Terrebonne Inc.  
Coaching Financier Trek Inc.  
Fondation de la Corporation des Concessionnaires  
d'Automobile de Montréal (CCAM)  
Corporation Du Fort St-Jean  
Corporation Financière Northbridge  
Coscia & Turner  
Courchesne Larose  
Croesus Finansoft Inc.  
Croft, Chantal  
D&D MTL  
Dalpé, Marc  
Davidson, Martin  
Deschamps, Josée  
Deschênes, Éric  
Desmarais, Olivier  
DLGL Technologies Ltée  
Dubé, Pauline  
Dufresne, Francis



Dugrenier, Pauline  
 Duschênes, Monica  
 Dutrisac, André  
 Ekotex  
 Énergir  
 Les Entreprises S.C. Martin inc  
 Eric T. Webster Foundation  
 Eurovia Québec Csp Inc.  
 Fiducie Jacqueline Lallemand  
 Fiducie Jean-Guy Larin  
 Financière Manuvie  
 Fitzgibbon, Pierre, député de Terrebonne,  
 Assemblée Nationale Du Québec  
 Fondation Ariane Riou et Réal Plourde  
 Fondation Bon Départ de  
 Canadian Tire du Québec  
 Fondation de la Fédération  
 des médecins spécialistes du Québec  
 Fondation Émilie-Tavernier-Gamelin  
 Fondation Famille Mongeau  
 Fondation Groupe AGF  
 Fondation Italienne St-Joseph  
 Fondation Jacques & Michel Auger  
 Fondation Joseph Brusadin  
 Fondation Michel Bernard  
 Fondation Norman Fortier  
 Fondation pour les enfants  
 Le Choix du Président  
 Fondation Sibylla Hesse  
 Ford, Mike  
 Gagnon, Rémi  
 George Hogg Family Foundation  
 Gosselin, Simon  
 Green Shield Canada (GSC)  
 Groupe IN-RGY Consultation Inc.  
 Groupe Ranger  
 Groupe Ressources des Moulins  
 Guertin, Nicolas  
 Guizzetti, René  
 Halo MVMT  
 Hamel, Dominique  
 Hamel, Lucie  
 Hince, Normand  
 Huot, André  
 Huotco Immobilier  
 Huot-Couture, Guillaume  
 Isabelle Paquet  
 Italiens de Montréal et Amis

La Rosa Centeno, Ludimila  
 La Source En Soi  
 Labonté, Louise  
 Lamarre Côté, Rachel  
 Langlois Avocats - Québec  
 Lapointe, Sylvie  
 Lapointe, Yvon  
 Larose, Michele  
 Latendresse, Lorraine  
 Lavoie, Marc Christopher  
 Lavoie, Michael  
 Le Repos St-François d'Assise  
 Leduc, Ginette  
 Lepage, Marie-Ève  
 Les Services Gazon Plus Inc.  
 Les Soeurs de la Présentation de Marie  
 L'Heureux, Bruno  
 Longpré, France  
 Lorenkowski, Barbara  
 Malo, Louise  
 Maltais, Jean-Luc  
 Marcil, Josette  
 Margarine Thibault  
 Marion, Jessica  
 Marissal, Vincent, député de Rosemont,  
 Assemblée Nationale du Québec  
 Marsolais, André  
 Maxime Thomassin  
 McFeetors, Raymond  
 Medina, Karen  
 Medtronic Foundation Volunteer Grant Program  
 Metchro  
 Meunier, Andréane  
 Milette, Jean-Marc  
 Mirabelli, Silvana  
 Mongodin, Adam  
 Monsieur Rafaël  
 MONTONI  
 Moreau, Magalie  
 Morin, Hélène  
 MURdesign  
 Nguyen, Hong Tuyen  
 Nissan de Victoriaville  
 Nobesco  
 Octave Maecenas Recrutement  
 de cadres et cabinet conseil  
 Ordre Fraternel des Aigles,  
 Aire 3981 Terrebonne inc

Ordre Militaire et hospitalier de St-Lazare de  
 Jérusalem - Commanderie de Montréal  
 Paquin, Louiselle  
 Patenaude, Pierre  
 Pâtisserie Michaud  
 Perreault, Fernand  
 Perreault, Diane  
 Les Pétroles du Lac inc  
 Plomberie J.L.  
 Pompage de Béton T.P.G ltée  
 Pouliot, Mario  
 Pratte, André  
 Prorec Inc.  
 Provigo Angus  
 Quach, Thumai  
 Ratelle, Manon et Réjean  
 Raymond, Pierre  
 Régis, Raymond  
 Rémillard, Gilles  
 Revue Ipa  
 Rhéaume, Sébastien  
 Roberge, Bernard  
 Rona Quincaillerie C. Bélanger Ltée  
 Sansoucy, Gilbert  
 Second Chance Café  
 Sheahan, Anne-Marie  
 Simard, Roxane  
 Simard, Karine  
 Simard, Michel  
 SIR Solutions  
 Société Des Alcools Du Québec  
 Stokes, John  
 St-Pierre, Francis  
 St-Pierre, Martine  
 Syndicat des Travailleuses et Travailleurs de  
 Bridgestone / Joliette (CSN)  
 TFI International  
 The Connor, Clark & Lunn Foundation  
 The Hay Foundation  
 Tremblay, Laurier  
 Trikeb inc  
 TVA Productions II inc  
 Univesta Assurances et Services Financiers  
 Vaillant, Jean-René  
 Verreault, Serge  
 Viau-Chagnon, Michèle  
 Zeller Family Foundation  
 15 anonymous donors

# Thank You to Our Donors

## Advertising agencies and media partners

Bell Média - Noovo  
Agence McCann  
Outfront Media  
Pattison  
Groupe TVA  
Cogeco Radio  
RDS  
Radio-Canada  
TV5 Québec Canada  
La Presse  
Verizon Média  
Télé-Québec

## Partners in goods and services

Déneigement Major et Fils  
Fondation St-Hubert  
Remboursement Re-No inc  
Café Barista  
Dormez-vous Entrepôt  
Naos Canada inc  
Microsoft Corporation  
Lush Canada

# Partners in the health sector

Centre hospitalier universitaire Sainte-Justine  
Centre intégré universitaire de santé et  
de services sociaux de  
l'Est-de-l'Île-de-Montréal  
McGill University Health Centre



# In Memoriam Donations

Thank you to those who have chosen to honour the memory of a loved one by making a donation to the Lighthouse, Children and Families.

In memory of:

Archer, Paul  
Aziz  
Beauchamp, Aurèle  
Beaudet, René  
Beaudry, Gilberte  
Bessette, Hervé  
Blouin, Michel  
Bouchard, Audréanne  
Brousseau, Lucille  
Bruzese, Giuliano  
Castonguay, Luc  
Chagnon, Robert  
Chaput, Xavier  
Charpentier, Vincent  
Chayer, Jonathan  
Chouinard, Danielle  
Chouinard, Maëlle  
Chouinard-Simard, Nolan  
Chvatal, Isabelle  
Clarisse & Elizabeth  
Clavier, Claudia  
Comeau, Bernard  
Croisetière, Rachel  
Cugurs, Amanda  
Danis, Daniel  
Dario Garcia Arredondo, Ruben  
De Gaillande, Michel  
Delaire, Émilie  
Deschamps, Juliette  
Deslauriers, Jean-Jacques  
Desroches, Chloé  
Devost, Olivier  
Di Menna, Angiolino  
Dion, Olivier  
Dupré, Isaac

Duschênes Best, Charlotte  
El-Khoury, Ghassan  
Estevan, Freddy  
Evoy, Maxime  
Forest, Marie-Ange  
Fortin, Gaston  
Frappier, Simon  
Gagnon, Andrée  
Gagnon, Ida  
Gariépy, Yvon  
Gauvin, Valérie  
Gendron, Gabriel  
Giroux Gendron, Rolland  
Gouin, Christian  
Guérin, Mathieu  
Kaima, Kerd  
Kerr, Carl Vincent  
Labbé, Frédéric  
Lachapelle, Andrée  
Lacroix, Michel  
Lafortune, Claude  
Lafortune, Thomas  
Lagassé, Patrick  
Laplanche, Victor  
Lapointe, Daniel  
Lauzon, Diane  
Lauzon, Pierre  
Lemire, Réjean  
Lepage, Michael  
Leroux-Gagnon, Andrée  
Lévesque, Simon  
Lise  
Malo, Bérénice  
Marc  
Marcil-Gratton, Nicole

Marie-Sophie  
Matte, Benjamin  
Mercier, Noah  
Métras, Michel  
Mignacca, Elena  
Mon Ange Emma  
Mongodin, Robert  
Monsieur Marra  
Moreau, Thérèse  
Morin, Nadine  
Moss, Betty  
Pallascio, Annabelle  
Paquet, Denise  
Parent, Sylvie  
Patrick  
Poirier, Xavier  
Portier, Patrik  
Renaud, Manon  
Rousseau, Venise  
Sabourin, Rita  
Sheptukhin, Anton  
Sicard, Maëlle  
Speranza, Rocco  
St-Aubin, Lise et Rolland  
St-Pierre, Vincent  
Sutherland, Evan  
Tardif, Mario  
Taylor, Margaret (Peggy)  
Thiffault, Jocelyn  
Tremblay, Audréanne  
Trifiro, Antonio  
Viau, Pierre  
Ward, Stella-Rose  
Willem Goulet, Léo







2725, Mont-Royal E av., Montréal  
(Québec) H1Y 0A1

**514 954-4848**

Toll Free: 1 866 954-4848

[info@phare-lighthouse.com](mailto:info@phare-lighthouse.com)

[phare-lighthouse.com](http://phare-lighthouse.com)

FOLLOW US :



The Lighthouse would like to thank the families who agreed to have their photo taken and the volunteer photographers who were able to capture the precious moments.

**Photos credits:**

Djimillei Ally, Kiran Ambwani, André Noël, Nathalie Rioux, Mikaël Theimer