

Annual report
2018-2019

20 YEARS OF LIVING LIFE TO THE FULLEST



Joey and Michaël celebrate their friendship
Credit: Jean Chambers



The Lighthouse
Children and Families



20 YEARS

OF LIVING LIFE

TO THE FULLEST

Mathias has fun during a respite care stay at The Lighthouse
Credit: Kiran Ambwani



The Lighthouse
Children and Families

Table of Contents

Letter from the Board Chair and
the Chief Executive Officer

2

Donors
with a Big Heart

3

Families Tell Their Story,
A Supportive Community

4

20 Years
of Cultivating Excellence

6

2018-2019
at a Glance

8

Board and Committees :
People of Action

10

Financial Results
2018-2019

12

Celebrating
20 Years

13

Pediatric Palliative Care,
a Community Commitment

14

Thank You
to Our Donors

16

Thank You
to Our Dedicated Allies

18

20 Years of Living Life
to the Fullest

20



Lighthouse employees, volunteers, interns, partners and children celebrate the birthday of their friend, Michaël
Credit: Kiran Ambwani

Letter from the Board Chair and the Chief Executive Officer

Making a dream a reality: The Lighthouse Children and Families turns 20

In 1881, Pierre Curie wrote in his diary, "It is important to make a dream of life and a dream reality" ¹ when, at age 18, he had begun to grasp the depth and breadth of the forces of life, including love (starting with that of a mother for her child) and the determination to accomplish what is dear to us despite the obstacles.

At The Lighthouse Children and Families, 2018-2019 demonstrated that this reflection by a perceptive adolescent still resonates. Twenty years ago, combining the love of children, compassion for their families and an unshakable determination, Nicole Marcil-Gratton and Michèle Viau Chagnon launched a veritable social project in co-founding The Lighthouse Children and Families. One had to be a bit of a dreamer to found The Lighthouse in 1999 and then open the Maison André-Gratton in 2007. But this dream came true with the welcoming, over the years, of over 825 families with a child suffering from a potentially fatal illness.

It is said that it takes a village to raise a child and this same village is needed to accompany him or her to the end and to support the child's family members so that they remain standing. It is also said that grief is as powerful as love. At The Lighthouse, these words are a measure of the strength shown by the community in accompanying each family with heart and compassion. When Nicole Marcil-Gratton died in June 2018, this strength made itself felt - stronger than ever - in the expression to her family members and other loved ones of the attachment, respect and gratitude felt towards her by the entire Lighthouse community. When The Lighthouse received the prestigious Coup de cœur Leadership award from the Ordre des infirmières et infirmiers du Québec (Québec Order of Nurses) in January, Ms. Marcil-Gratton's words resonated in people's minds, perpetuating her memory as in a dream: "When life has said its final word," she had declared at the inauguration of Maison André-Gratton, "parents and children can stay together in this house, living peacefully and with dignity until the last moments of the child's life."

During the past 20 years, The Lighthouse community has expanded beyond its current home, reaching across Québec and outside the province, enlisting the hearts of thousands of persons to help affected families and to remember children who have passed away. Over time, pillars of the community have offered what is unique to them: the quiet wisdom of kind grandparents, the unbelievable resilience of bereaved parents, the committed determination of brothers and sisters of sick children, the irreplaceable experience of a seasoned team, the thirst to learn of students discovering their vocation, the comforting compassion of devoted volunteers, the generous, vital support of donors and engaged allies.

This year, intensifying its outreach and embracing the talents of exceptional volunteers, employees and interns, The Lighthouse has seen its community grow and strengthen its ties like never before. Allowing to Québec's first pediatric palliative care centre all the resources necessary so that seriously ill children can enjoy life to the very end. For all the children who will never celebrate their 20th birthday, The Lighthouse says thank you to those who have accompanied them and to those who will be continuing the journey for the next 20 years!



François Gratton
Board Chair



Johanne Desrochers
Chief Executive Officer



¹ Bibliothèque nationale de France : <https://gallica.bnf.fr/ark:/12148/btv1b9080307f/f6.item>

Donors with a Big Heart

A community that has shown its generosity for 20 years

"I can't wait for my birthday," says a voice in the ad for My Birthday as a Gift, a fundraising initiative as well-known as The Lighthouse itself. "Me, too! I can't wait for your birthday!" responds a child, who smiles despite being ill.

Approximately half of donors since June 2013 learned about The Lighthouse through the My Birthday as a Gift campaign. The ads, generously produced by Zip Communication and aired at no charge by media partners, have inspired thousands of people to invite family and friends to give to The Lighthouse rather than give them a birthday present.

During the last five years, some 50 celebrities have promoted My Birthday as a Gift. In all, 3,127 Lighthouse allies have offered their birthday as a gift and 12,395 donors have answered the call, giving no less than \$774,325 in total.

Over time, many ways of giving have developed within the community. Today, allies invite their immediate circle to support the cause by initiating fundraising activities or taking part in Lighthouse events. Notably, by participating in a running event benefitting The Lighthouse each spring in the Scotiabank Charity Challenge.

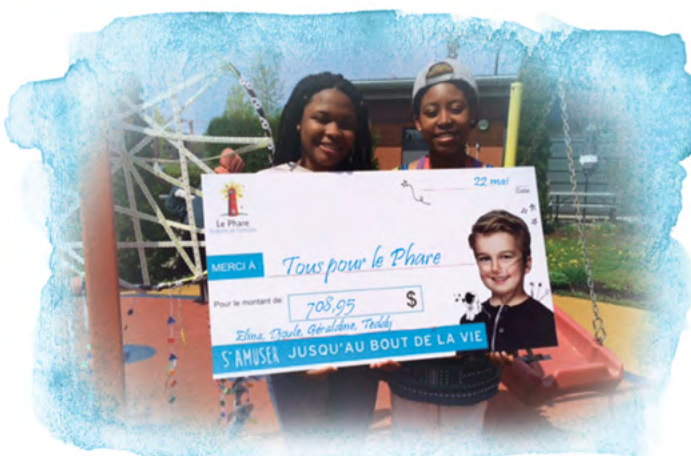


Sébastien Martinez at the summit of Mont-Blanc
Credit: Sébastien Martinez

This past year, to capture people's imagination and encourage giving, Lighthouse allies have climbed mountains! In July, Sébastien Martinez scaled Mont-Blanc in France, displaying The Lighthouse's logo at the summit in the middle of summer. In October, the brother-and-sister duo of Charles-Éric and Laurie-Eve Langlois ascended to Everest Base Camp. Describing their adventure, Laurie-Eve paid tribute to the family of her brother, whose daughter comes to The Lighthouse, and then addressed the families of healthy children: "I ask you to imagine for just a moment your daily life altered by illness and to transform the emotion you thereby feel into a little support for the cause."

Over the past months, the wildest and tamest challenges followed one after the other as allies worked hard and deployed their creativity to mobilize the community. Martine St-Pierre, a Lighthouse mom, contributed more than \$7,000 to the cause by selling lollipops. Young Léanne Fournier, who lives in the Rosemont-Angus district, organized a Halloween costume race with neighbours to raise money and entertain The Lighthouse children. In Saint-Hyacinthe, Élina Nyandwi and some 30 of her friends representing various countries staged a "World Tour" show to collect donations for The Lighthouse.

A multitude of fundraising initiatives, each more inspiring than the last, have marked the past two decades. Thanks to the magic of today's social media, Lighthouse allies now reach across the world and unite in support of The Lighthouse – one for all and all for one!



Élina et Djoule visiting The Lighthouse after their fundraising
Credit: The Lighthouse Children and Families

Families Tell Their Story

A supportive community

“During the holidays, my sister-in-law posted photos of everyone on Facebook, except of my family,” says a mom bitterly. “It’s as if we had all suddenly disappeared.”

“Since my daughter’s death, I’ve shared pictures so that people will remember her, but ... the more I share, the less my friends speak to me about her,” a dad sadly notes.

Families of a seriously ill child and bereaved families are, in many ways, like all other families. In particular, they are on social media but they share moments of an atypical daily life that is at times wonderful and at other times very difficult. Their relatives and friends are not always able to respond or react, giving rise sometimes to discomfort or things left unsaid, sometimes worse.

Quebec media, however, are increasingly dealing with complex issues surrounding palliative care and the end of life. A social dialogue is emerging in Québec. By sharing their story, parents have opened the way to communication unparalleled in The Lighthouse’s 20-year history. By accepting The Lighthouse’s invitation to meet with seasoned journalists, many families have contributed to breaking the taboo surrounding pediatric palliative care.



Harold Gagné interviewing
Lighthouse medical director Dr. Ramsay,
Credit: Mikaël Theimer



Graham Baxter and Geneviève Turcotte with their daughter, Éloïse
Credit: Nathalie Rioux

In a major report entitled “Des parents confrontés à la mort de leur enfant” (Families facing the death of their child) presented on J.E. via the TVA network on November 29, families told their story to reporter Harold Gagné, whom The Lighthouse team welcomed for six days of filming during the year. The report opens with a shot of the late William’s gentle face. William’s mother, Fabienne Borgola, speaks of her apprehension about coming to The Lighthouse at the beginning of her son’s illness. Her admirable strength is revealed when she speaks of how her perception of it changed: “It’s not a house of death. The Lighthouse is a house of happiness before the end.”

In the same report, Marie-Josée Audet, Mathias’s mom, explains that “The Lighthouse is a five-star: it’s like a hospital, but with love.” Echoing this thought in a report by Amanda Kline that aired on CTV News on December 27, Graham Baxter, the father of little Éloïse, who laughs heartily at the camera, refers to the organization’s name to explain what it represents: “A lighthouse offers safe passage.”

Martine St-Pierre and her son, Guillaume
Credit: Journal Le Reflet - Denis Germain



"I try hard to be in the present moment with her because, essentially, it's the unknown," Maélie's mom, Karine Beaurivage, says to the camera. In the same vein, explaining the complexity of daily life that can change at any moment, Martine St-Pierre, Guillaume's mom, speaks, with moving courage, about the coming end of her son's life: "I would like him to die in my arms at The Lighthouse, not at home when I am all alone because I don't know how I'm going to react."

As well as bravely sharing their concerns, parents also share their pride and love for their child. On TVA, Donald Forest, the late Marie-Ange's dad, declares, "My daughter was never afraid - never!" In an equally moving and inspiring tribute, he points out that "she feared only one thing - that she would be forgotten." To honour his daughter's memory and keep his promise to her to help other families, this proud father remains a pillar in The Lighthouse community. When he and other parents meet, they often acknowledge one another without even saying a word.

To explain the families' profound commitment to The Lighthouse community, François and Marc-Antoine Charpentier, the late Vincent's dad and brother, invited La Presse journalist Fanny Lévesque to take part in The Lighthouse children's first outing to the Santa Claus parade ("Le Père Noël des enfants malades", November 18, 2018) and then join them in a visit to The Lighthouse ("Pour tous les autres Vincent", January 6, 2019). Expressing their desire to give back, Vincent's dad says simply, "If there's one thing that impressed me after Vincent's death, it's that The Lighthouse families are never alone."

Jason, his mother, Jade Castonguay, and his little brother
at Santa Claus Parade Destination Downtown
Credit: The Lighthouse Children and Families



Speaking in a TVA interview about how families support and inspire one another, Sophie Galarneau, Megan's mom, smiles tenderly at her daughter and tells journalist Harold Gagné with a touch of humour, "When you look at the other parents, you don't have a choice - you develop strengths!"



Sophie Galarneau and her daughter, Megan
Credit: J.E. TVA Nouvelles



Donald Forest's tattoo in honour to his daughter, Marie-Ange
Credit: Donald Forest

20 Years of Cultivating Excellence

sharing expertise in the service of children and families

“Last year, The Lighthouse truly touched me, as much through its actions and its impact as through its staff, volunteers, sponsors and partners,” declared Éric Bujold, President, National Bank Private Banking 1859 and co-president of the 2019 financing cocktail. He added with infectious pride “I would like to point out that the Fondation de l’Ordre des infirmières et infirmiers du Québec has just awarded The Lighthouse Children and Families its prestigious Coup de Coeur Leadership 2019 award. Congratulations to the whole team! It’s a wonderful way to mark 20 years of extraordinary work!”

The Lighthouse is driven by the expertise of experienced nurses who coordinate health care and services, advise health professionals and families with regard to palliative care and bereavement support. They also coordinate situations requiring emergency measures planning, along with professional training and development. They take charge of nursing care in line with the complex needs of each child and his or her family, working closely with other colleagues and partners in the community’s hospitals and organizations in the administration of preventive therapeutic procedures. After assessing a child’s health, they establish and implement the appropriate

care and treatment plan. Together, with facilitator and specialized education colleagues, the entire team oversees the community life and personalized activities for each child and his or her family.

Most Lighthouse children have been diagnosed with a nervous system disease, a congenital malformation and chromosomal abnormality or a condition originating during the perinatal period. The Lighthouse’s multidisciplinary team has developed a unique skillset over the past two decades by working with seriously ill children. The team has become the trusted reference relied upon by affected families and front-line health care workers across Quebec. They provide advice, training and in the case of students, an internship and mentorship environment.

Welcoming twice as many students as in 2017-2018, the team offered, on average, over nine hours of practical training per day. Drawing upon its www.phare-formation.com platform to present 40 McGill University-certified modules, The Lighthouse team offered healthcare professionals in various regions of Québec training sessions presented by Lighthouse doctors and nurses via videoconference.





Olivier and Christina Phan, recreation specialist
Credit: Kiran Ambwani

In May 2018, at the Quebec Association of Palliative Care conference, professor Josee Chouinard (Université du Québec en Outaouais) and Lighthouse social worker Marion Onno gave a presentation on decision making workshops. The workshops provide guidelines to support parents of seriously ill children. Nursing assistant Julien Pagé and nurse Karine Morissette-Caron gave a workshop entitled *Le dossier clinique informatisé : un enjeu de communication et de qualité* on The Lighthouse's experience in implementing the use of electronic patient records.

The Lighthouse took part in six university research projects in disciplines ranging from nursing care to social work and anthropology. The team members' contribution to the development and mobilizing of leading edge knowledge was also greatly appreciated at the 22nd International Palliative Care conference at McGill University in October 2018. Franco Carnevale, convention planning committee member, Lighthouse ethics advisor, nurse, psychologist and clinical ethicist participated in a seminar entitled *Rethinking the "Palliative" in Pediatric Palliative Care: An Interprofessional Examination of "All Things Palliative" in our Research and Practice*. He also led the roundtable entitled *Examining the "Palliative" in Pediatric Palliative Care*, the panel entitled *Examining "Palliative" From Diverse Clinical Locations: A Panel Discussion* and the student forum entitled *Moral Distress Experienced by Palliative Care Trainees: Difficult Encounters in Clinical Practice and Research*.

The Lighthouse's interdisciplinary team was represented at the conference in a workshop on the challenges and successes in providing end of life care in the community. The workshop was facilitated by Marion Onno and Franco Carnevale in collaboration with nurses Hélène Lévesque, Johanne Desrochers and Dr. Jacques Ramsay. Tanguy Châtel, in collaboration with Johanne Desrochers, gave a presentation entitled "Living out your life well at home: a Franco-Québécois comparative analysis of the main psychosocial factors involved in remaining

at home". This presentation was followed in March 2019 by an article entitled "Being able to live out one's life at home: a Québec delegation in France" in "Accompanying life up until death", a journal published by Les Presses universitaires, Grenoble. Lastly, in addition to the supervision of a number of internships at The Lighthouse and three years of teaching a module on pediatric palliative care to nursing techniques students at Champlain College, Lighthouse nurse Antoinetta Petti collaborated on the workshop entitled *Supporting Children Grieving the Dying or Death of a Family Member*, presented at McGill University by Andrea Warnick.

In February 2019, at the invitation of the Chez DUCEPPE theatre company in connection with David Lindsay-Abaire's play *Le Terrier*, journalist Denis Lévesque hosted a panel discussion on grieving the loss of a child in which journalist Pierre Bruneau and his spouse, Ginette St-Cyr, the parents of the late Charles Bruneau, Marion Onno, Lighthouse co-founder Michèle Viau-Chagnon and psychologist Johanne de Montigny participated.

In September 2018 Lighthouse assistant chief executive officer Stéphanie Barker and John Parisella, former Québec delegate general in New York, gave a master class at Université de Montréal on the need for philanthropic professionals to master interpersonal, political and governmental relationships. At the invitation of the Big Brothers and Big Sisters of Canada, Ms. Barker also provided training on developing a philanthropic culture to the directors and officers of that organization's offices across Québec.

Building on the momentum of the past 20 years and in line with its culture of excellence and shared expertise, in 2018-2019, The Lighthouse vigorously continued its mission of fully supporting children and affected families throughout Québec.



Fabienne Borgela, Ricardeau François
and social worker, Marion Onno
Credit: J/E, TVA Nouvelles

2018-2019

at the glance

SERVICES AVAILABLE AT THE LIGHTHOUSE'S MAISON ANDRÉ-GRATTON

3,644
overnight
stays offered to children

87 %
occupancy rate*

*The current occupancy rate allows The Lighthouse to welcome, at any time, children at the end of life of for an emergency situation.

4,9
nights
(average length of stay)

750
total stays

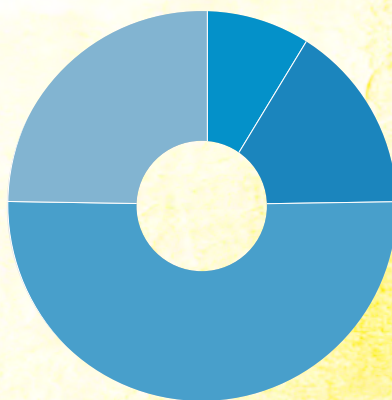
for the past
20 years
825
admissions
(children et families)

34 new children
admitted
this year

PATIENT PROFILE AND RANGE OF SERVICES

206 active cases

80 adults and children bereavement support cases



By age group

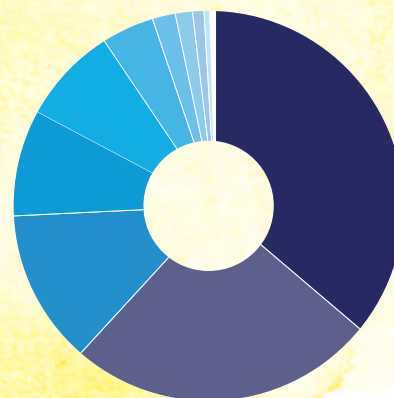
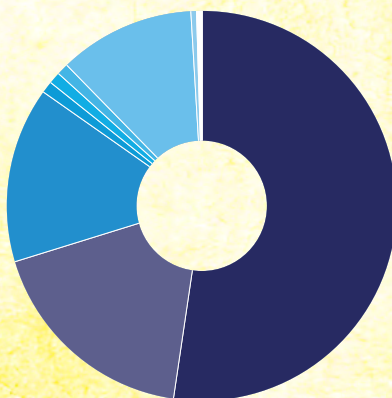
0-2 :	8,74 %
3-5 :	16,02 %
6-12 :	50,49 %
13-18 :	24,75 %

By referral

Public social health sector	86,41 %
● Hospital :	52,43 %
● Rehabilitation centre:	17,96 %
● CLCS :	14,08 %
● Intermediary ressource :	0,97 %
● Other :	0,97 %
● Education sector	0,97 %
Private social health sector	12,62 %
● Internal referral :	11,65 %
● Private clinic :	0,49 %
○ Private organization :	0,49 %

By region

● Montréal :	35,92 %
● Montérégie :	26,21 %
● Lanaudière :	12,14 %
● Laval :	8,25 %
● Laurentides :	7,77 %
● Estrie :	4,37 %
● Capitale-Nationale :	1,94 %
● Mauricie et Centre-du-Québec :	1,46 %
● Outaouais :	0,97 %
● Saguenay-Lac-Saint-Jean :	0,49 %
● Abitibi-Témiscamingue:	0,49 %



EMPLOYEES AND VOLUNTEERS

24/7

medical team

68

employees

(care and services, recreational activities, kitchen, maintenance, fundraising, communications and administration)

166

interns

3,672

training hours
provided to interns



14,090

volunteer
hours

PHILANTHROPY

4,679

persons

donated to The Lighthouse in 2018-2019



\$1,923,948

raised through philanthropy

\$517,108

received in goods and services donations

67

community-organized fundraising activities

\$3,1 million

raised during the last 6 Cocktail Receptions

COMMUNICATIONS

Monthly average
involvement rate

12,7%



6,2%



“Des parents confrontés à la mort de leur enfant”
J.E. TVA Nouvelles - November 29, 2018

500,000

viewers
November 29, 2018

145,000

video views
on Facebook

85,000

page views
from the article on TVA Nouvelles

1,727

Facebook shares
of content from the J.E. program

Board and Committees

People of action

The members of The Lighthouse's various committees deserve to be commended for their commitment and dedication. These valued partners from all walks of life generously offer The Lighthouse their particular expertise thanks to which the organization can uphold the highest quality standards. THANK YOU for supporting The Lighthouse's cause with such conviction.

BOARD OF DIRECTORS

Chair

François Gratton

Group President, TELUS and Chair, TELUS Quebec

Honourary Chair

The late Nicole Marcil-Gratton

Co-founder
The Lighthouse Children and Families

Vice Chair

Maxime Vandal

President
Les Ensembliers
(until March 2019)

Treasurer

Marcel Martin

Regional Vice President, Sales and Key Accounts, Québec and Eastern Canada, Placements AGF inc

Secretary

M^e Serge Lalonde

Counsel
Dentons Canada S.E.N.C.R.L.

Directors

Dr Louis Beaumier

Neonatologyist, Pediatric Advanced Care Team (PACT)
MUHC - Montreal Children's Hospital
(since March 2019)

Jean-Daniel Brisson

President, Groupe Conseil StratEXEC inc.
(until October 2018)

Dre Maria Buithieu

Pediatrician, Medical Director at the Network Activity Coordination Centre (NACC)
CHU Sainte-Justine

Viviane Croux

Vice-president - National Accounts
TD Commercial Banking

Isabelle Desmarais

Parent
Investigations Coordinator
Chambre de la Sécurité Financière

Dr Geoffrey Dougherty

Pediatrician, Division Director of General Pediatrics
MUHC - Montreal Children's Hospital
(until September 2018)

Alain Miquelon

Senior Advisor
Champlain Financial Corporation
(until June 2018)

M^e Dominic Paradis

Vice-President, Legal Services and Corporate Secretary,
National Bank of Canada

Marilyne Picard

Parent
Co-founder
Parents jusqu'au bout
(until September 2018)

Michèle Viau-Chagnon

Co-founder
The Lighthouse Children and Families

GOVERNING COUNCIL CARE AND SERVICES

Chair

Isabelle Desmarais

Parent
Investigations Coordinator
Chambre de la Sécurité Financière

Pediatric Hospital Representatives

Dr Louis Beaumier

Neonatologist, Pediatric advanced Care Team (PACT)
MUHC - Montreal Children's Hospital
(since March 2019)

Dre Maria Buithieu

Pediatrician, Medical Director at the Network Activity Coordination Centre (NACC)
CHU Sainte-Justine

Dr Geoffrey Dougherty

Pediatrician, Division Director of General Pediatrics
MUHC - Montreal Children's Hospital
(until September 2018)

Parents' Representatives

Karine Beaurivage

Parent

Ann Dumont

Parent

The Lighthouse Children and Families Representatives

Johanne Desrochers

Chief Executive Officer

Hélène Lévesque, Inf. M.A.P.

Care and Services Director

Annick Gervais

Family Services Coordinator

Suzanne Racicot

Interim Care and Services Director
(until October 2018)

AUDIT COMMITTEE

Chair

Marcel Martin

Regional Vice President, Sales and Key Accounts, Québec and Eastern Canada, Placements AGF inc

Viviane Croux

Vice-president - National Accounts
TD Commercial Banking

Suzanne Douville, CPA, CA

External Member

Pierre Vallerand, CPA, CA

Partner, Certification
Raymond Chabot Grant Thornton

The Lighthouse Children and Families Representatives

Johanne Desrochers

Chief Executive Officer

Stéphanie Dionne, CPA, CMA

Director of Administrative Services

PHILANTHROPIC DEVELOPMENT COMMITTEE

Louise-Marie Brousseau

Certified Corporate Director
ASC
(until March 2019)

François Gratton

Group President, TELUS and Chair, TELUS Quebec

Maxime Vandal

President
Les Ensembliers
(until March 2019)

The Lighthouse Children and Families Representatives

Johanne Desrochers

Chief Executive Officer

Stéphanie Barker

Assistant Chief Executive Officer

CONTINUING PROFESSIONAL DEVELOPMENT SCIENTIFIC PLANNING COMMITTEE

Co-Chairs

Dr Jacques Ramsay
Medical Director

Hélène Lévesque, Inf. M.A.P.
Care and Services Director

External Members

Franco A. Carnevale, PhD, nurse
Ethicist and Psychologist
McGill University and
MUHC - Montreal Children's
Hospital

Josée Chénard, PhD, T.S.
Professor,
Université du Québec en
Outaouais

Internal Members

Johanne Desrochers
Chief Executive Officer

Madeleine St-Gelais, Inf. M.A.P.
Training Framework
Consultant

Marion Onno, M.S.s., T.S.
Social worker

Antonietta Petti, inf. bac.
Palliative care and
bereavement support nurse

RESEARCH ETHICS COUNSELLORS

Franco A. Carnevale, PhD, nurse
Ethicist and Psychologist
McGill University and
MUHC - Montreal Children's
Hospital

Manon Champagne, PhD
Interim Vice-Rector of Academics,
Research and Creation
Université du Québec en
Abitibi-Témiscamingue

STRATEGIC COUNSELLOR

Dre Micheline Ste-Marie
Pediatrician

OMBUDSMAN

Me Nadine Mailloux
Ombudsman
City of Laval

COCKTAIL RECEPTION COMMITTEE - THE LIGHTHOUSE'S 20TH ANNIVERSARY EDITION

Honourary Presidents

Éric Bujold
National Bank of Canada
Private Banking 1859

François Gratton
TELUS

Great Friends of The Lighthouse

Sophie Desmarais
Philanthropist

Bernard Séguin-Poirier
Artist, master enameller

Admirals

Viviane Croux
Toronto-Dominion Bank

Julie-Martine Loranger
McCarthy Tétrault

Patrick Moreault
CIBC

Richard Ouellette
Les Ensembliers

Dominic Paradis
National Bank of Canada

Commodores

Thierry Bodson
IN-RGY

Vicky Boudreau
Bicom Communications

Isabelle Chagnon, M.Ps.
Psychologist

Jérôme Côté
Régis Côté et associés

Danie Deschênes
Oxygène Événements

Sébastien Guénette
JTI-Macdonald

Georges Karam
Entrepreneur

Robert Karpman
Toronto-Dominion Bank

Michael Lavoie
Octave Maecenas Recherche
de cadres

Pier-Luc Talbot
Toronto-Dominion Bank

Lieutenant

Michèle Viau-Chagnon
Co-founder
The Lighthouse Children and
Families

GRANDPARENTS' CIRCLE

Réjeanne Beaucaire

Suzanne Douville

Pierre Duceppe

Andrée Fortin

Rémi Gagnon

Hélène Laurin

Johanne Mayrand

Monique Morin

Madeleine Thuot

Francine Tousignant

Michèle Viau-Chagnon

YOUNG DONNORS' CIRCLE

Nicolas Archambault
Producer and content creator

M^{re} Marie-Pier Barabé
Crochetière Pétrin

Tifanie Brazier
TELUS

Evelyne Brunet
National Bank of Canada

M^{re} Olivier Coche
National Bank Financial

Eve-Marie Cormier
CDPQ - Caisse de dépôt et
placement du Québec

M^{re} Claudia Deschamps
SNC-Lavalin inc.

Caroline Louis
Montreal Symphony
Orchestra

Marc-Antoine Saroli
UNITRANS

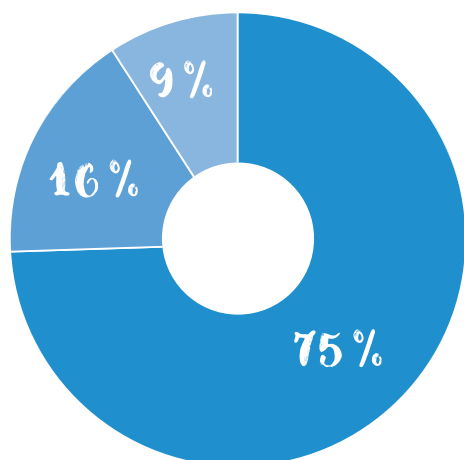
Gabrielle Saucier, CPA, CMA
Air Transat

Financial Results

2018-2019

Thanks to the trust and generosity of our donors and funders, The Lighthouse Children and Families ended the 2018-2019 financial year with a total revenue of more than **\$4.4 million**, excluding in-kind donations of goods and services.

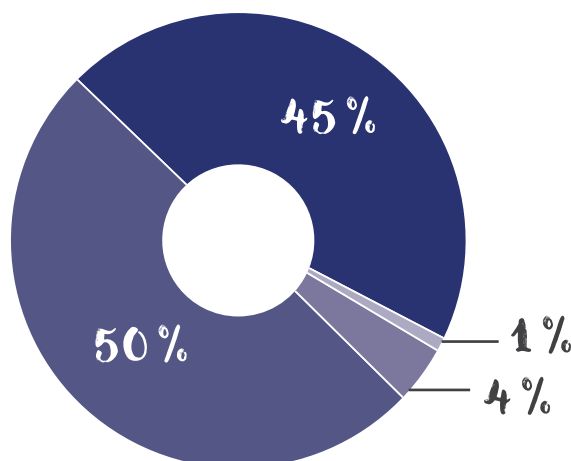
Breakdown of expenses



- Care and services to children and families
- Philanthropic development and communications
- Administration

All Lighthouse services are free. The support of donors and partners provided 50% of total funding in 2018-2019. The Lighthouse received a grant per bed from the Quebec Ministry of Health and Social Services representing 45% of its funding, in addition to benefitting from non-recurring public revenue that accounted for 4% of total funding. There was also generous support in the form of goods and services not reflected in the above graph.

Sources of funding



- Ministry of Health and Social Services grant
- Philanthropy
- Other non-recurring revenue
- Other revenue

Like last year, 81% of The Lighthouse's expenses were essentially related to its team's talents. With its overall resources and the continuous support of dedicated volunteers, The Lighthouse was able to provide high-quality services to seriously ill children and respite and support services to their families, in addition to contributing to training its team of successors and developing knowledge and best practices in pediatric palliative care.

Donors of goods and services

The Lighthouse received a great deal of support in the form of goods and services with a total value of **\$517,108**.

The Lighthouse's Maison André-Gratton benefitted from **generous support** to remain a welcoming environment for children and their families. Among other donors, our thanks to Marc Vaillancourt, Anjinnov, Plomberie Ducasse inc., Groupe Gaudet, Usines GIANT, Formetal, Déneigement Major et Fils, Auvent Ecodesign, Dalex Jacar.

In addition to the free advertising provided by Cogeco, Québecor, Bell Media and Google that contributed to its visibility, The Lighthouse benefitted from the exceptional services of Zip Communication for the 20th anniversary graphic signature and of KOZE TV for the production of wonderful videos.



The team from **Ad hoc recherche** demonstrated its enormous generosity towards The Lighthouse in collecting funds and helping prepare the grounds and the children's courtyard for winter. Together with **Brandbourg**, Ad hoc also graciously backed The Lighthouse's management in field research on the impact and benefits of the care and services provided to families by The Lighthouse - a major support serving to emphasize The Lighthouse's social impact in Québec.

Celebrating 20 Years

Personalities support The Lighthouse

Édith Cochrane, who offered her birthday as a gift, voluntarily hosted The Lighthouse's 20th anniversary special edition cocktail, which featured the kind participation of **Ariane Moffatt**, whose family supported The Lighthouse by taking part in the ScotiaBank Charity Challenge. In connection with the launch of her album entitled *Petites mains précieuses*, she produced a limited edition of Kiehl's brand hand cream, profits from the sales of which will go to The Lighthouse.

The Lighthouse enjoyed TV outreach with **Patrice L'Écuyer**, **Sophie Nélisse**, **Marie-Chantal Perron** and **Valérie Hamel**, of The Lighthouse team, on the Radio-Canada program *Silence, on joue !* On *Le Tricheur* on the TVA network, **Karine Gonthier-Hyndman** and **Marie-Josée Gauvin** gave their winnings to The Lighthouse. **George Karam**, a guest dragon on Radio-Canada's *Dans l'oeil du dragon*, joined the cocktail reception committee of honour.



Sophie Nélisse, Marie-Chantal Perron and Valérie Hamel at *Silence, on joue !*
Credit: The Lighthouse Children and Families



Christopher The Pig offers his birthday as a gift
Credit: The Lighthouse Children and Families

Ariane Moffatt and her family at the Scotiabank Charity Challenge
Credit: The Lighthouse Children and Families



Lighthouse Cocktail host
Édith Cochrane
Credit: Éric Carrière

At the cocktail, Vieux-Rosemont district councillor **Christine Gosselin**, delegated by the mayor, praised Montrealers' commitment to The Lighthouse. In a *Décider Rosemont ensemble* video on Facebook, Rosemont MP **Alexandre Boulerice** declared that The Lighthouse is the place within his riding of which he is most proud. Also on Facebook, minister **Pierre Fitzgibbon** declared that he is a proud ambassador of The Lighthouse, a cause dear to his heart.

Lastly, social media darling **Christopher The Pig** visited The Lighthouse, delighting the children and adults alike!

Signature event: annual cocktail

Under the honorary co-presidency of **Éric Bujold**, President, National Bank Private Banking 1859, and **François Gratton**, Group President, TELUS and Chair, TELUS Québec, *The Dream of Being 20* special edition cocktail marking The Lighthouse's 20th anniversary took place at the CDPQ on March 19.

Conveying the evening's key message, **Isabelle Desmarais**, member of the board of directors, and **Patrick Moreault**, member of the cocktail reception committee of honour, spoke as the parents of little Maxime, a child bursting with joy despite his illness: "Coming into The Lighthouse is difficult. As a parent, you don't expect to have to request pediatric palliative care for your child. Instead, you dream of signing him up for a basketball team or a swim club and then cheering him on from the bleachers when he shines. For 20 years, The Lighthouse has brought together around families like ours people with a big heart who appreciate our children's exploits. So, the bleachers are filled with friends and our children shine! Over time we've come to know these friends ..."



The Lighthouse's 20th anniversary edition annual cocktail
Credit: Éric Carrière



La lumière du Phare, a canvas by Bernard Séguin-Poirier
Credit: The Lighthouse Children and Families

Acting as the families' spokespersons, they thanked two of The Lighthouse's great friends, philanthropist **Sophie Desmarais** and artist-in-residence and honorary grandfather of The Lighthouse children **Bernard Séguin-Poirier**, for their support, along with the entire community of donors who so generously support the cause. The cocktail has raised more than \$3.1M (net) in the past six years!

Pediatric Palliative Care

A community commitment

Neighbourhood life

In July 2018, Lighthouse friend Pierre Duceppe received the **Volunteer of the Year award** for the riding of Rosemont from the National Assembly. Celebrating the neighbourhood's 25th anniversary in September, the Technopole Angus team unfurled a **Coup de cœur** banner for The Lighthouse, expressing the Rosemont community's heartfelt attachment to the centre's children and families.



Coup de cœur banner from Technopole Angus
Credit: The Lighthouse Children and Families

A first for The Lighthouse

In November, The Lighthouse children attended, for the first time, the **Destination centre-ville Santa Claus Parade**. François Charpentier, a Lighthouse dad, arranged for the exceptional Urgences-Santé volunteer team to accompany the children for this magical outing.



Tao and Rescousse from Urgences-Santé heading to the Destination centre-ville Santa Claus Parade
Credit: The Lighthouse Children and Families

Devoted persons who can be counted on

Every month, The Lighthouse receives solid support from persons who are both committed and generous,, demonstrating to the community that the children and families are in their thoughts. These persons, who give monthly - **there are more than 100 of them** - contribute to providing The Lighthouse with invaluable financial stability.

In December, the Bota team kindly helped prepare the signature holiday event. The efforts of volunteers and staff was recognized by the community and applauded by sponsors. Among the recognized sponsors were Arjo, Capera Expert Immobilier and Chocolats Favoris of the Rosemont-Angus neighborhood.

The organizing committee spared no effort to make this winter wonderland evening truly magical for over 100 participants. The Lighthouse's Child Life animation team, invited by the Quebec Volunteer Action committee for **International Volunteer Day**, showcased a video paying tribute to those vital forces in the community.



Employees and volunteers at the holiday recognition event
Credit: Kiran Ambwani

One midday per month, to broaden expertise and to celebrate life, volunteers, students and employees gather to chat. Their spirit of solidarity and compassion is seen in the 20th anniversary video produced for social media with Lighthouse families, volunteers, employees, donors and allies who all display a warm smile - the smile of **people with a big heart who can be counted on**.

Preserving memory

Professional musicians and bereaved parents Monica and Christopher offered a musical break. A tender moment during which the memory of their daughter, Charlotte, brightened The Lighthouse's sitting room and courtyard. Last November, in Terrebonne, grieving families gathered for a ceremony during which the names of children who had died in the past five years were called out, tenderly and serenely.



Monica and Christopher offer a musical break for Lighthouse children
Credit: Mikaël Theimer

Scotiabank Charity Challenge

In radiant April 2018 sunshine, **72 participants** raised \$33,900 for The Lighthouse when they ran in the Scotiabank Charity Challenge. Two family teams – ex-Lighthouse physician Dr. Bédard's family and the Couturier-Deschamps family (a Lighthouse family) – gave their all during this sports fundraising event. A board of directors member also ran in memory of a sister who died young.



The Couturier-Deschamps family at the Scotiabank Charity Challenge
Credit: The Lighthouse Children and Families

A committed online community

To mark The Lighthouse's 20th anniversary, TVA and Le Journal de Montréal, La Presse, Radio-Canada and CTV showcased The Lighthouse and its community, serving as **spokespersons for the cause** while facilitating an unequalled involvement on social media. At the end of 2018-2019, The Lighthouse had 11,252 likes on Facebook and, with a 12.73% monthly involvement rate, could offer Lighthouse families and friends a platform rich in stories of daily life where each community member encourages the next person or shares a sincere thank-you for gratefully received support. Every special day, such as Valentine's Day or International Brothers and Sisters Day, is an opportunity for conversations and photo exchanges. A visit to The Lighthouse by the **Carabins de l'Université de Montréal** was a surprise that delighted many more people than the children present, judging by the positive reactions online. Lighthouse families have made for themselves a **virtual space where support proliferates**. It's not rare for parents to post their visit to The Lighthouse on social media and to take care of forwarding goodwill messages and greetings to the other members of the community.

Visite



Jade Castonguay-Harding est à Le Phare Enfants et Familles.

30 mars - Montréal

Bonne fin de semaine du Phare !



Radiating from one circle to the other

The Lighthouse Grandparents' Circle was invited to give presentations and take part in activities to benefit The Lighthouse at a number of seniors' residences. In June, the Young Donors' Circle organized a festive summer cocktail that raised \$24,000.

Thank You to Our Donors

The Lighthouse wishes to express its heartfelt and unending gratitude to each of its donors, sponsors and partners. Thank you for choosing and believing in The Lighthouse and for carrying the cause forward like a luminous torch for all to see. Your trust in The Lighthouse enables us to move forward and to create and to build a loving community for the children.

\$100,000 and more

Bell Média, Québec
Power Corporation du Canada

\$50,000 to \$99,999

Cogeco Inc.
Desmarais, Sophie
TELUS

\$10,000 to \$49,999

Anonymous
Ad hoc recherche
Altru Foundation inc.
Banque Nationale du Canada
Banque TD
Caisse de dépôt et placement du Québec
CIBC Gestion privé de patrimoine
Demers, Martin
Desmarais J.R., Paul
Fondation Bourassa Savaria
Fondation de l'Ordre des infirmières et infirmiers du Québec (OIIQ)
Fondation du Grand Montréal
Fondation Famille Godin
Fondation J. Armand Bombardier
Fondation J.-Louis Lévesque
Fondation Marisa Sophie
Fondation Mirella & Lino Saputo
Fondation Norman Fortier
Fondation René Malo
Fondation Simple Plan
Fondation St-Hubert
Fondation Ultramar
Fournelle, Marie-Annick
Google Inc.
Groupe TVA
Koze TV
LC Entrepreneurs Généraux (2000) Ltée
Les Soeurs de la Présentation de Marie
Magnus Poirier
Maître et Chef Traiteurs

Mike & Valeria Rosenbloom Foundation
Opération Enfant Soleil
Oxygène Événements
Poirier, Michel
SAQ
Séguin Poirier, Bernard
Société de Gestion Cogir S.E.N.C.
Soeurs des Saints Noms de Jésus et de Marie du Québec
Succession Lise Thompson

\$1,000 to \$9,999

Anonymous
Affinerie CCR - Une compagnie Glencore
Alithya
AlphaFixe Capital Inc.
Anjinnov
Arjo
Atelier Stone Age
Auvent écodesign
Bachand, Jean-Claude
Baril, André
Barker, Stéphanie
Beaudry, Paul
Bellemare Studio
Berthiaume Pneus et Mécanique
BICOM Communications
Bio-K Plus International
Blais, Simon
BMO Banque de Montréal
Bombardier, J.R. André
Borden Ladner Gervais
Bota Bota
Boucher, Patrick
Bourbonnais, Stéphan
Brodeur, Jean-François
CAE
Café Barista
Cantin, Geneviève
Carbonleo
Carpette Multi-Design
Carreiro, Carlos
Crossfit Ahuntsic
Chagnon, Fanny

Chamberland, Jean-Pierre
Champagne, Manon
Charbonneau-Baillargeon, Louise
Charpentier, André
Chartrand, Liette
Collège Ahuntsic, Benoit Tougas et les élèves du programme Techniques de l'impression
Comeau, Robert
Corporation d'Investissement Sanpalo
Costco Wholesale Canada Ltd.
Croix Bleue
Croux, Viviane
CVL Cosmetics North America
Dalex Jacar
Dalpé, Marc
Déneigement Major et Fils
Desmarais, Olivier
Desrochers, Carole
Desrochers, Johanne
Develocan Management Inc.
Dionne, Stéphanie
DLGL Technologies Corporation
Dubé, Pauline
Dubuc-Gaudreau, Philippe
Duhamel, Vincent
Dumas, Marie-Claude
Duschênes, Monica
Dutrisac, André
École Nationale de Cirque
Ekotex Corp.
El-Gadi, Nisreen
Encadrements Marcel
Énergir - le nouveau Gaz Métro
Environnement Électronique
Eric T. Webster Foundation
Excelle MD
Faucher, Nicolas
Festival Truck'N' Roll en coeur
Fidelity Investments Canada
ULC
Fiducie Jacqueline Lallemand
Fiducie Jean-Guy Larin
Financière Manuvie
Flynn, Tom

Fondation Denise et Guy St-Germain
Fondation Énergie Valero du Canada
Fondation Étoile de Martin
Fondation Fasken Martineau Dumoulin
Fondation Howick
Fondation italienne St-Joseph
Fondation LCF
Fondation Michel Bernard
Fondation pour les enfants le Choix du Président
Fondation Sibylla Hesse
Formétal
Fortin, Guy
François, Vivien
Gabriel Scott
Gagnon, Nathalie
Galerie de Bellefeuille
Galerie Simon Blais
Gamache, Claire
Garderie éducative L'Alpha à l'Oméga
Garderie éducative Lilise et Oscar
Gascon & Associés
Gauthier, Denis
George Hogg Family Foundation
Geothentic
Gérin, Jean
Gosselin, Simon
Gratton, Andrée-Anne
Gratton, François
Gratton, Robert
Groupe Financier Trihey
Groupe Gaudet Inc. Division électrique
Groupe Paramount
Groupe Ranger
Groupe Ressources Des Moulins
Guénette, Sébastien
Gustav Levinschi Foundation
Gym Studio Locomotion
Hamid, Eric
Hexavest
Houle, Daniel

Ingénia Technologies
IN-RGY
Invesco Canada
Irakiza, Annabelle
JTI-MacDonald Corporation
Karam, Georges
Karavaniers
KébecSon
Kravet Inc.
La Fondation communautaire juive de Montréal
La Fondation de la Famille Birks
La Luz Portraits
Laberge, Anne-Marie
Laboratoires Charles River Services précliniques Montréal inc.
Lamarre Consultants
Lamarre, Alexandre
Langlois avocats
Lapierre-Adamcyk, Évelyne
Lasik MD
Lavoie, Michael
Le Bonhomme à lunettes
Leber & Son Canada Inc.
L'Équipe Spectra
Les Ateliers Bolduc et Frères inc.
Les Centres d'Achats Beauward Ltée
Les Ensembliers
Les Systèmes Cisco Canada Cie
Louis Beaumier MD
Magnan, Nicole
Marcil, Josette
Martin, Nicole
McFeetors, Raymond
Michaud, Jean-Sebastien
Milette, Jean-Marc
Moreault, Patrick
Morin, Monique F.
Mouvement Desjardins
Nickerson, Jerry
Ordre militaire et hospitalier de St-Lazare-de-Jérusalem
Commanderie de Montréal
Orr, Jeffrey
Pacart Québec inc.
Palmer, Sophie

Paquin, Louiselle
Paradis, Daniel
Patry, Manon
Pellerin, Marie-Pierre
Pensionnat Notre-Dame-Des-Anges
Perreault, Fernand
Philipps, Karine
Plomberie Ducasse
Pratte, André
Québecor Média
Radiance Media
Rae, John A.
Ratelle, Manon et Réjean
RBC Banque Royale
Red Carpet & Rug Co
Régis Côté et associés
Rémillard, Gilles
Rocheleau, Serge
Rouillard, Stéphane
RTI 911
Rubin, Joyce & Chuck
Saint-Pierre, Guy
Schlader, Thomas
SEC Station Est/ Le Groupe Maurice
Services médicaux Jacques Ramsay Inc.
Shorcan Brokers Limited
siècle en siècle inc.
Simard, Matthieu
SIR Solutions POS
SMR Experts
Stokes, John
SuccessFinder
Taylor's Hope Foundation
Telecon
The Bannerman Family Foundation
The Cole Foundation
The Hay Foundation
Transat Canada Tours Inc. / Air Transat
Trempe, Isabelle
Tretiak, Gregory D.
UBS Bank
Usines GIANT inc.

Vaillant, Jean-René
Viau-Chagnon, Michèle
Villeneuve, Luc
Vukets, Michael
Ward, Yves
WC Hanna Medicine Professional Corporation
Wind Spirit
Xm Peinture
Zip Communication

Legault, Olivier
Lippé, Mathieu
Maman de Nathalia Juhasz
Marcil-Gratton, Nicole
Matte, Benjamin
Métras, Michel
Molly Lloyd, Jane Elizabeth
Morin, Marthe
Pallascio, Annabelle
Parents de Jose Lledo
Phaneuf, Nathaniel Alexandre
Poitras, Mamy Jeanine et Papy Robert
Portier, Patrik
Rodrigue, Gérard
Rose, Victoria
Rowley Hotte, Hélène
Roy, Jocelyne
Roy, Mélanie
Savaria Plante, Denise
Sheptukhin, Anton
St-Pierre, Vincent
Tremblay, Audréanne
Trillo, Rosa
Veliz, Maria Antonia
Ward, Stella-Rose
White, Edwin

The Lighthouse also thanks the Pathy Family Foundation and the Fondation D'Amours for their generous support.

IN MEMORIAM DONATIONS

Thank you to those who made a donation in memory of a loved one named here:

Angelo
Arduini, Anna
Bédard Dr., Denis
Best, Charlotte
Bouchard, Audréane
Bouchard, Régina
Brunet Labelle, Kevin
Chaput, Xavier
Charpentier, Vincent
Chénard, Régina
Cugurs, Amanda
Dinelle, Luc
Ducharme, Cédric
Épouse de Gilles Carpentier
Forest, Marie-Ange
François, William
Guérin, Mathieu
Kerr, Carl-Vincent
Laplanche, Victor
Latour, Florent
Leduc, Henri



The late Nicole Marcil-Gratton (1943-2018)
Co-founder of The Lighthouse Children and Families
Credit: The Lighthouse Children and Families

PLEASE NOTE

This is a list of donors during the past fiscal year: April 1, 2018 to March 31, 2019. It includes those who donated goods and services, as well as the 2018-2019 installments of donations (cumulative totals) spread over a number of years. Every effort has been made to ensure accuracy. If your name or your company's name has been omitted or misspelled, please accept our apologies and let us know so that we can make the necessary correction(s) in our records.

Thank You to Our Dedicated Allies

It is said that it takes a village to raise a child. At the Lighthouse, we know that it takes a village to accompany a child to the end and support the family through it all, so that they can remain standing. In the past 20 years, this village has grown to include great allies who support the community in a thousand and one ways. Thank you from the bottom of our hearts to all of them for their invaluable support!

MY BIRTHDAY AS A GIFT

Allard, Charlotte et Laurence	Couillard, Cassandra	Guilbert, Olivia	Loranger, Julie
Argyriou, Michael	Cyr, Elodie	Guillemette, Sydney	Loranger, Véronique
Aube, Lyska	Czyzowicz, Pierre	Guimaraes, Maria Julia	Loranger, Vicky
Bastille, Marie-Josée	Dalpé, Sébastien	Hains, Marc-Antoine	Lorrain, Johanne
Bazinet, Émile	Darche, Lucie	Hamel, Mélanie	Lucas-Gaudreau, Daphnée
Beaudet, Lise	Dauphin, Marie-Lou	Hardy, Maxime	Mallette, Charles
Beaulieu, Olivier	De Melo Goupil, Karine	Hebert, Antoine	Marcil, Marie-France
Beauparlant, Roxane	De Nobile, Élisabeth	Hosselet, Noémie	Marcoux, Marie Eve
Béland Major, Sarah	Demers, Anne-Marie	Houle, Jackie	Maréchal, Sarah
Bélanger, Amélie	Denault, Gabrielle	Huppé, Vicky	Martin-Montebran, Élodie
Bélanger, Vanessa	Deschenes, Elaine	IDS, Jayke	Massicotte, Samuel
Bélanger-Leos, Louka Amadeo	Desjardins, Chloé	Immer, Christian	Massignani, Jean-Kristophe (In memoriam)
Bernard, Gareau	Desjardins, Mélanie	Issabre, Fatou	Matloub, Setareh
Bernard, Marie-Eve	Desjardins, Nick	Jerome, Anabelle	Messier, Anne-Frédérique
Bertrand, Luc	Desroche, Alice	Jolicoeur, Daniel	Meunier, Frédéric
Bilocq, Jennyfer	Desrosiers, Carl	Joncas Côté, Anne	Monette, Valérie
Birabent, Pauline	Dion, Stéphanie	Jost, Emmanuelle	Montambault, Marie-Claude
Boileau, Michel	Doucet, Charlotte	Keo, Maylee	Montano, Maria Claudia
Bouadma, Wassim	Drolet, Rachel	L., Ariane	Morin, Julie
Bouchard, Marilou	Dubuc Gaudreau, Gabrielle	L., Laurent	Morrisette, Claudia
Bouchard, Charles	Ducasse, Jules	L., Maya Bisola	Nélias, Marie-Christine
Boutet, André	Ducasse, Patrick	Labbé, Casandra	Nolet, Valérie
Brablin, Laurence	Ducharme, Olivier	Labelle, Marie-Eve	Pagé, Rose
Breault, Mélissa	Dulude, Genevieve	Laberge, Catherine	Pageot, Francine
Brisson, Marianne	Dumaresq, Renée	Laberge, Sylvie	Paradis, Myriam
Brousseau, Guillaumeui	Durocher, Lucie	Labrie, Chantal	Parent, Samuel
Brousseau, Jennyfer	Dussault, Tannya	Lachambre, Brigitte	Parisien, Roselyne
Brunet, Benoit	Edmé, Tiffany	Lambert, Laetitia	Patulli, Danielle
Cadioux, Ghyslain	Eugenia, Delana	Lamy, Chantal	Paul, Sarah-Maude
Canuel, Marie-Claude	Falardeau, Suzanne	Landry, Maria	Peck, Jean-Sébastien
Caron, Sébastien	Fortin, Marie-Michelle	Langis, Stéphanie	Pellerin, Charles
Caron, Sophie	Friole, Lizza	Langlois, Isabelle	Perreault, Eric
Carrier, Jérôme	Gagné, Marie-Eve	Larose, Louise	Pham, Truyen
Cauchon, Nadia	Gagné, Nancy	Laterreur, Kevin	Piché, Mélanie
Chabot, Céline	Gagnon, Mireille	Lauzon, Josée	Pilon, Christiane
Chabot, Kevin	Gagnon, Nathalie	Lavoie, Christelle	Pilote, Jacques
Champagne, Line	Garneau, Coralie	Lavoie-Pilon, Carolanne	Poitras, Mégane
Chandonnet, Myriam	Gauthier Bisson, Chantal	Laylle, Mailys	Potvin, Caroline
Chapados, Francine et Marcel	Gauthier, Jennifer	Le Breton, Sophie	Poudrier, Geneviève
Charbonneau, Léo-Paul	Gendron, Claudia	Le cren, Maëlys	Poulin, Sandra
Charette, Marc-Antoine	Gendron, Vincent-Xavier	Leblanc, Francheska	Pouliot-Marcoux, Marjolaine
Charland, Caroline	Généreux, Julie	Leblanc, Nicole et Bertrand	Quinn, Jennifer
Chevalier, Audrey	Gentils, Alexis	Leclerc, Andréane	Rainville, Stephanie
chouinard, Jennifer	Gignac, Martin	Leclerc, Charles	Ramssamy, Jonathan
Cloutier, Mathieu	Gilet, Noah	Lemay, Anne-Marie	Rémillard, Charlie
Cochrane, Edith	Girard, Alexandra	Lemoyne, Veronique	Renaud, Julie-rose
Collin, Nancy	Girard, Florence	Lessard, Roxanne	Rhéaume, Émilie, Olivier, Raphaëlle
Cote-Martin, Satyanna	Gosselin, Suzie	L'Italian, Junior	Richard, Alain
	Gravel, Nathalie	Liuu, Robb	Richer, Véronique
	Guérard, Amélie	Livernoche, Jean	

Rivest-Arsenault, Lylou
 Robert, Marie-Audrey
 Rochon, Adrien
 Rodrigue, Marie-Eve
 Rouleau, Roxane
 Roy, Shania
 Roy, Yvon
 Savard, Isabelle
 Sfiat, Nacera
 Simard, Dominic
 Simoneau, Kathy
 Sisse, Fatu
 Sissokho, Astou Tapa
 St-Amour, Livia
 St-Gelais, Madeleine
 St-Pierre, Martine
 Sylvestre, Mégane
 Tchamou, Pamela Annya
 Teste-Harnois, Julien
 Tisseur, Marc Alexandre
 Toupin, Sarah
 Trahan-Perreault, Daphné
 Tranchemontagne, Maude
 Tremblay, Xavier
 Tremblay-Doucet, Éliane
 Turcotte, Audrey
 Turgeon, Linn
 Valade, Emilie
 Vendette, Marie-Hélène
 Verret, Pierre-Luc
 Verville, Chantal
 Vigneault, Jérôme
 Villemure, Simon
 Vincent, Jolyann
 Vong, Chivy
 Ward, Marie-Pier
 Wood, Linda

COMMUNITY SUPPORT

Benefit activities

Académie François-Labelle
Journée couleur
 Annabelle Irakiza
 Annie Rouillé
Don séance Sophrologie
 Camp Edphy
 Campagne Générosité Rogers
 Chantal Fortin
Truck'N Roll En Coeur Bedford
 CPE Au Petit Talon
 Déneigement Major & Fils
 Employés d'Ad hoc recherche
 Famille Campbell-Thibodeau
 Famille Perreault, Loyer & Bourgeois
 François Bourque
Pasta Week
 François Charpentier
Méchoui à l'Acadie
 Guy Brodeur
LC Entrepreneurs Généraux (2000) Ltée

Ingrid Chenier
Don pour un mariage
 Intact Financial Corporation
 Kryptonite
Événement Et Voilà
 Le Chic Show
 Les entreprises de Pavage et de Jar
 Membres mécanicien industriel local 2182
 Octasis
 Première Communion Carlota
 Programme jumelage bénévolat Croix Bleue
 Projet NOVA
 Salon Le 7 carré
Une journée pour Jenny Lou
 Shorcan
 Simon le Zèbre
 Sororité Nu Delta Nu
 Stéphane Lebel
Don pour un mariage
 Tiffany Habelrih
The Cit-R-Us Club
 Valmont Cosmetics
 Yanick Gouin

Sports and cultural events

Club Richelieu Golf
 Fonds Elizabeth
Concert sur le Tapis Rouge
 Crossfit Ahuntsic
 Équipe de Hockey Les Patriotes
 A1 Saint-Eustache
 Jules Montpetit
Demi-Marathon
 Laurie-Eve et Charles-Éric Langlois
Ascension du camp de base de l'Everest
 Léanne Fournier
Viens courir l'Halloween pour le Phare!
 Normand Laurence
Tournoi de golf
 San Andrea
Tournoi de Volleyball
 Sébastien Martinez
Ascension du sommet de l'Europe
 Spectacle Florence Weber

Televised games

Karine Gonthier-Hyndman
Le Tricheur, TVA Productions II Inc.
 Marie-Chantal Perron
Le Tricheur, TVA Productions II Inc.
 Marie-Josée Gauvin
Le Tricheur, TVA Productions II Inc.
 Valérie Hamel
Silence, on joue !, Radio-Canada

Sales and fundraising

ARPAC
Programme Auto pour la vie
 Danielle Guénette
 Ekotex

Élèves de l'École Saint-Louis-de-Gonzague
 Employés du Laboratoire Charles River, département des biomarqueurs
 Famille Day
 Karine Philipps
Encan Tupperware et Journée Jeans
 La Culotte à L'Envers
 Le Bonhomme à lunettes
 Lucille Behan
École Primaire Ahuntsic
 Pensionnat Notre-Dame-des-Ange
Marché de Noël
 Résidence Station Est - Groupe Maurice
Marché de Noël
 Marjolaine Cronier
 Martine St-Pierre
Sucrez-vous le bec
 Nancy Tchang
 Productions Daniel Blondin
 Provigo Angus
 Rosemont Les Quartiers
 Suzanne Bisailon
Résidence Le Savignon - Groupe Maurice
 Tatiana Ivanova
 Véronique Richer

SCOTIABANK CHARITY CHALLENGE

Abukasm, Jad
 Archambault, Marie-Anne
 Arsenault, Louise
 Baldino, Thomas
 Baril, André
 Baron, Emmanuel
 Beurivage, Karine
 Bédard, Antoine
 Bédard, Laurence-Emmanuelle
 Bélanger-Roy, Elisabeth
 Bérubé, Chantal
 Bilotto, Luca
 Bilotto, Sofia
 Bonheur, Pascal
 Boudreault, Hélène
 Brien, Charles
 Carle, Marie-France
 Charrette, Ariane
 Corbeil, Isaac
 Corbeil, Olivia
 Côté, Julie
 Couturier, Karl
 Couturier, Marie-Ève
 Couturier, Jean-Guy
 De Vreeze, Véronique
 Descamps, Michaël
 Deschambault, Émilie
 Deschamps, Anik

Deschamps, Dany
 Deschamps, Hugo
 Deschamps, Jonathan
 Desrochers, Margaux
 Desrochers-Robillard, Hugo
 Dionne, Stéphanie
 Dodd Pruneau, Lydia
 Faucher, Alexandre
 Ferland, Sabrina
 Gagnon, Pâquerette
 Gagnon, Nathalie
 Gentile, Gabriella
 Gentile, Gloria
 Giguère, Vincent
 Giguère, Ariane
 Guitar, Éloïse
 Hamel, Valérie
 Hélie, Bianca
 Kordane, Rihab
 Lambert, Julie
 Langlois, Maélie
 Leduc, Ginette
 Lefebvre, Isabel
 Lefebvre, Joanie
 Legault, Vincent
 Levert, Rosalie
 Marcil-Deneault, Florence
 Martinez, Sébastien
 Masse, Vicky
 Moffatt, Ariane
 Moffatt, Paul
 Moffatt, Henri
 Morin, Nancy
 Morissette, Karine
 Otis, Liliane
 Ouellette, Richard
 Pelland, Jean-François
 Péloquin, Camille
 Pereira, Paulo
 Petti, Antoinetta
 Petti, Lucia
 Phaneuf, Benoit
 Pruneau, Maryse
 Pruneau, Bernard
 Richard, Maryse
 Robillard, Claude
 Rousseau, Julyanne
 Samson, Annie-Hélène
 Stevens, Anne
 Thibodeau, Jacques
 Truong, Dong Hai
 Turmel, Camil
 Vaillancourt, Louise
 Vandal, Maxime

20 Years of Living Life

to the Fullest !

A multi-disciplinary
team

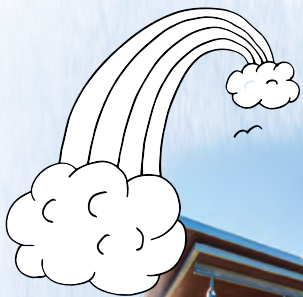


Volunteers
at the heart
of the action

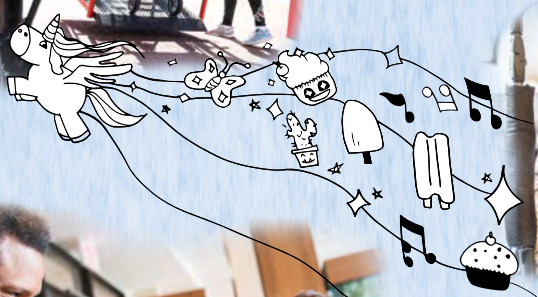


A close-knit
community

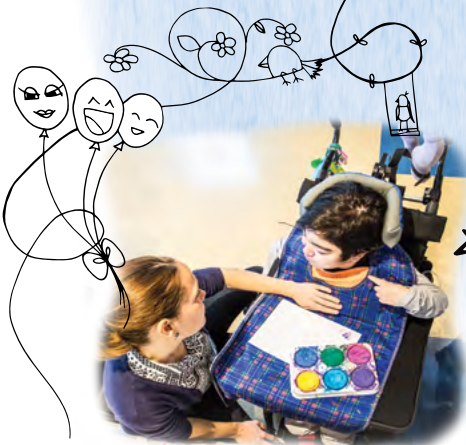




Opening of Maison André-Gratton (2007)



A unique and luminous living environment



The Lighthouse
Children and Families

Credits

Infographics

Donated by Claudine Pinel, Pixocreation

Writing and graphic design

The Lighthouse Children and Families

*The Lighthouse thanks Camden
for the original graphic conception

Revision

Frank Alfieri and Madeleine Thuot
Lighthouse volunteers

The Lighthouse Children and Families

Translation

Donated by Peter Vranckx

Photography

Courtesy of:

Annie-Claude Bédard

Donald Forest

Éric Carrière

Fondation de l'Ordre des infirmières
et infirmiers du Québec (OIIQ)

Jean Chambers

J.E. TVA Nouvelles

Journal Le Reflet -Denis Germain

Kiran Ambwani

Ladislav Kadyszewski

Mikaël Theimer

Nathalie Rioux

Sébastien Martinez and

The Lighthouse Children
and Families

Lou and his mother Marie-Claude Gauthier at a zootherapy family workshop
Credit: Mikaël Theimer

20 YEARS
OF LIVING LIFE
TO THE FULLEST

The Lighthouse
Children and Families

2725 Mont-Royal Avenue East
Montreal, Quebec H1Y 0A1

514 954-4848

Toll-free : 1 866 954-4848

info@phare-lighthouse.com

phare-lighthouse.com

