



Our top priority:
*providing access
to pediatric
palliative
care*



The Lighthouse
Children and Families

Table of Contents

Letter from the Board
Chair and CEO

3

Living in the Moment: Karine Tells
the Story of Her Daughter Maélie

4

A Gentle Goodbye at The
Lighthouse - Julie Tells the Story
of Her Son Loïc

6

Care and Services at the
Lighthouse : Looking to the Future

8

2016-2017 at a Glance

10

Boards and Committees: Because
They Care

12

Financial Performance
2016-2017

14

Thank You to Our Donors

18



Tao and Ophélya, a member of the activities team at the Lighthouse/Cover page: Alamah and Ghyslaine, a volunteer at the Lighthouse

Letter from the Board Chair and CEO

Thanks to the generosity of our many donors and volunteers, The Lighthouse Children and Families is continuing its mission to provide first-rate palliative care to children and families from Montreal, but also Outaouais, Mauricie, and even as far afield as Abitibi-Témiscamingue and Saguenay.

The stories of Maélie and Loïc show the impact of The Lighthouse on the lives of so many families. We pool all our resources to provide the best possible services free of charge in both French and English.

To maintain the quality of care and services we are so well known for, we had to step up efforts this year to find new sources of funding. We received more revenue from our cocktail reception than ever before, and the Ministry of Health and Social Services renewed the grant that it has generously provided The Lighthouse for years now.

Universal access to pediatric palliative care, both in the community and at home, is the cornerstone of our 2016–2021 strategic plan. Our top priority is to continue efforts to maintain excellence of care at The Lighthouse while also expanding our range of services in the community. Our hope is to share the benefit of our expertise with more children, families, volunteers, and even palliative homecare teams.

However, this goal can only be reached with the cooperation and participation of parents, which explains our new “parent-partner” approach and changes to our rules of governance to encourage greater parent participation.

This past year—the first of our strategic plan—has seen inspiring progress through a series of actions designed to equip The Lighthouse to fully play its multiplier role in the community: share its expertise and knowledge and provide clinical support for families, volunteers, and caregivers.

We're proud of what we've accomplished:

- We have stepped up our **professional training for employees**, so that they in turn are equipped to provide training to others in pediatric palliative care.
- We have been successfully **recertified as a palliative care facility** by the Quebec health ministry.
- We have ratified collaborative agreements with key partners: the **Jeremy Rill Centre**, the provincial authority on sudden infant death syndrome; **Fédération du Mouvement Albatros du Québec**, to provide professional training in pediatric palliative care; and **Centre universitaire intégré de santé et des services sociaux de l'Est-de-l'Île-de-Montréal**, to work together for ongoing improvements in the quality and coordination of care.
- We're working hard to create **digital resources for families**, volunteers, and caregivers, to provide them with information and distance training.
- We've introduced a new, **enriched workshop model** to help families with decision making.

The management team has seen the arrival of energetic and highly talented new members: Céline Laberge, Director of Fundraising and Communications; Ginette Leduc, Director of Human Resources; and Dr. Jacques Ramsay, Medical Director. These compassionate and experienced professionals have joined a strong team that has delivered great results this year and makes us feel confident and optimistic about the future. We commend the entire Lighthouse team for their unstinting commitment to the children and their families and offer them our sincerest gratitude.

In closing, allow us to express our deep gratitude to the families who honor us with their trust at the most difficult times of their lives. We are here for and because of you. To be at your side will always be a special privilege.



Jean-Daniel Brisson
Chair

Johanne Desrochers
Chief Executive Officer

Living in the Moment:

Karine Tells the Story of Her Daughter Maélie

As vulnerable, delicate, and small as a porcelain doll, Maélie has lived under the constant threat of viruses that her fragile system struggles to fight. Maélie was a second child, one that her mother, Karine Beaurivage, dearly longed for after a return to school and a career change. She was born on July 22, 2013, after a complication-free pregnancy and labor. However, Karine quickly noticed the differences between Maélie's development and that of her oldest son. Despite trying to reassure herself by repeating that each child is unique, Karine felt powerless hearing Maélie's tears and seeing her difficulty eating. She became increasingly worried by Maélie's lack of response to stimuli and by the fact that her first smile, long desired, never came.



Maélie in the arms of her big brother, Raphaël



Karine and Maélie in the multisensory room at The Lighthouse

A few months after Maélie's birth, her parents finally learned that what they had thought were repeated blinks were in fact severe epileptic seizures. The doctors' prognosis was bleak and brutal, and Karine learned that the lives of her daughter and her entire family would be far different from what they had pictured. For many months, Karine wore herself out searching for a medication or treatment that would improve her daughter's state. However, her hopes amounted to nothing, and after Maélie's first year of life, her daughter's situation had barely changed. That's when a neurologist from Sainte-Justine mentioned The Lighthouse to Karine and her spouse.

Karine called The Lighthouse straightaway. Her family and her spouse's were in Quebec City, too far away to help, and exhaustion was setting in from all the care Maélie required. Today Maélie is three and a half, and she does not walk or communicate. She is fed by a tube and frequently suffers from fluid buildup in her respiratory system. Her state requires around-the-clock surveillance and care.



Maélie with her mother Karine, her big brother Raphaël, and her father Charles-Eric

It was under these difficult circumstances that The Lighthouse came into Maélie's life. The sudden ability to take breaks from caring for Maélie changed Karine's life. She was able to think of herself again and pick back up certain activities that helped her to manage her stress, such as exercise and painting.

But for Karine, The Lighthouse's support goes far beyond just the skilled care and all the affection and attention that Maélie receives during her stays. She is truly touched by how accessible and available the entire Lighthouse team is, and how attentive and caring they are.

Karine is amazed at the breadth of services available from The Lighthouse and how easy it is to discuss her and her daughter's needs with the team. And she is especially grateful for how sincere and humane everybody is. She says that each time Maélie is admitted for a stay feels very therapeutic for her, as well. People are available to talk, and they listen to what Karine has to say about Maélie's condition and progress from her unique perspective as a mother.

Karine also acknowledges that The Lighthouse has helped her tremendously in her own personal development and how she sees her daughter's illness and future. She is now much less preoccupied with fighting the disease and more focused on appreciating and living in the present moment. Instead of grappling for progress or a cure, Karine is now centered on reassuring and comforting Maélie, and savoring the times they share together.

In December 2016, Maélie's condition worsened during a stay at The Lighthouse, the only place Karine could conceive of saying goodbye to her daughter. But Maélie held on and survived, and continues to be surrounded by the love of her mother, who, thanks to The Lighthouse, has learned to value every moment that life has to offer.

A Gentle Goodbye at The Lighthouse:

Julie Tells the Story of Her Son Loïc

On August 31, 2009, Julie Grenier became the happy mother of Loïc, a handsome, healthy baby boy who developed normally. However, when he was five years old, the calm and smiling Loïc became excited and agitated. He underwent many medical consultations in their hometown of Mont-Laurier, but this led only to suspicions of behavioral trouble and to a long waiting list to meet with a pediatric psychiatrist.

Nevertheless, Julie's maternal instinct kept telling her that only extreme physical discomfort could explain Loïc's behavior. After many weeks of worry and uncertainty, the doctors diagnosed a urinary tract infection and transferred Loïc to Sainte-Justine for further testing. On May 22, 2015, the cruel results came back: Stage 4 cancer of the muscles and muscular tissue, metastasized to the lungs, with a 30% chance of survival.

Alone to face the cruel truth, Julie felt as though the ground was slipping out from under her feet and she was being sucked into a bottomless pit. The next two months were spent at the department of oncology at Saint-Justine, where Loïc undertook intensive chemotherapy and radiation treatments. Their return home to Mont-Laurier in July was brutally hard. Weakened by weeks of bedrest, Loïc had to relearn how to walk. And traumatized by the long hospitalization and aggressive treatments, he developed an acute phobia of the hospital, and even the idea of returning there sent him into a deep state of distress and panic.



Loïc and his mother Julie, swimming in the heated pool at The Lighthouse



Loïc, 6 years old, during one of his stays at The Lighthouse

However, Loïc had to return. To lessen her son's anxiety and limit the number and length of his hospital stays, Julie made frequent roundtrips between Mont-Laurier and Montreal. But five months of constant travel drained Julie's mental and physical energy, so when the doctors told her in January 2016 that Loïc had to enter palliative care, she broke down. They explained the palliative care services at The Lighthouse, but Julie would hear nothing of it—she was determined to bring Loïc home to live out his days in Mont-Laurier. Julie was angry, explosive, and hostile. Still, she let her friends convince her to give The Lighthouse a try. She arrived guarded and mistrustful, but was finally won over by the team, who through their professional and personal interaction provided small moments of calm in the whirlwind of her suffering.

Since palliative radiation and chemotherapy treatments were necessary several times a week, distance became a major obstacle. The Lighthouse offered Julie and Loïc lodging at Maison André-Gratton, its pediatric palliative care home, where they would benefit from constant surveillance and attention from the nursing staff. They settled in, making a little nest for themselves and forging ties of affection and friendship with the entire team.

In summer 2016 after a stay in Mont-Laurier, they came back to Montreal to continue the palliative chemotherapy treatments and try to keep the cancer from spreading further. They received a warm welcome from the staff at The Lighthouse, and both felt like they were coming home.

At the beginning of October, Loïc's trip to Bagotville Military Base provided by Children's Wish had to be cut short due to a sudden worsening of his state. When he got back to The Lighthouse, Loïc asked to see everyone he loved. They came in one by one, their hearts breaking and their throats choked with grief, to say goodbye to this unique and beloved boy.

Lying beside Julie, Loïc, seeing tears roll down her cheeks, whispered in his weakened voice not to worry, that everything would be fine since he was going to see his grandpa. This is how Julie recalled her little boy's final moments: "When Loïc was born, they put him on my stomach, where he cried for the very first time. I wanted his final moments on Earth to be like his first—in my arms, curled up in the warmth of maternal love." On October 24, 2016, Loïc passed peacefully away at The Lighthouse, cradled in his mother's arms. Julie will never forget her son's death, and remains ever grateful to the team at The Lighthouse, who succeeded, with humanity and sensitivity, in softening this painful time and wrapping her in such warm, loving care that she will be eternally marked by the memory of it all.



MjAnimation visting Loïc and the other children at The Lighthouse

Care and Services at The Lighthouse: Looking to the Future

Access to pediatric palliative care is a top priority of The Lighthouse. Every child in need of palliative care, and every child's family, deserves comprehensive, quality services whenever they need them, wherever they live, whatever language they speak, whatever their culture or financial situation, and however much care or supervision they require. And the goal must always be to create an environment that fosters normal and complete development of the child, provides a safe and secure setting—and this is essential—allows the child to play and enjoy life right until the end!

Sharing our expertise and knowledge is one of the pillars of our 2016–2021 strategic plan. A digital learning platform will be launched in the next year with the support of our new senior training advisor to improve access to information and remote training for families, volunteers, and caregivers.

Improving training is one of the ways to make good on our ambitious plan to offer universal access to pediatric palliative care, so no child in need goes without. Information is a priority, so we have joined with partners to create training modules for the people who actually visit the homes and bedsides of children in communities across Quebec. It's our way of sharing our expertise in pediatric palliative care with families, caregivers, volunteers, and the general public. What's more, we've reached an agreement with FMAQ (Fédération du Mouvement Albatros du Québec) to use its volunteers to meet the home

respite care needs of families in rural Quebec. A new partnership with the University of Quebec in Abitibi-Témiscamingue will be used to train Albatross volunteers.

With the strategic plan now in place for a year, we're seeing a significant increase in demand for pediatric palliative care training from the community, both in terms of basic training and professional development. The Lighthouse has thus welcomed students from every field of study directly or indirectly related to its mission: medicine, nursing, auxiliary nursing, home care, social work, art therapy and special education, architecture, management, and more. Interns have come from France (Poitou-Charentes, Nord-Pas-de-Calais, Provence) and Luxembourg, as well as from Quebec universities (Montreal, Concordia, UQAM) and colleges (Vieux-Montréal, Champlain).

Care and service quality—the very essence of our mission—mobilized our entire team during the year. No effort was spared to make sure only best practices were used. And these efforts led to concrete results, including palliative care facility certification through 2021 for The Lighthouse from the Quebec Ministry of Health and Social Services in recognition of the quality of care we provide, Canadian palliative care certification for our nursing advisor, and the holding of The Lighthouse's first-ever "Science Day" on pediatric palliative care in collaboration with a variety of clinical experts. In fact, we plan to make this latter activity an annual event open to all of our partners.



Recreation technology intern Olivier, and Mickael under the star-studded parachute

The Care and Services Department stepped up collaboration with its main partner: families. We invited families to take an active part in strategic planning, in developing a survey to gauge the “patient experience,” and in vetting and improving the action plans stemming from the strategic plan and the results of the “patient experience” survey. Results were presented to the Care and Services Committee (which is chaired by a parent member of the Board) for analysis and follow-up.

A workshop on “complex decision making” was also offered to parents. Parents have hard decisions to make about their children’s care, and the consequences can affect the entire family. Two and a half days in length, the workshop was led by our social worker and a professor from the University of Québec in Outaouais.



We were also excited to welcome our new medical director, **Dr. Jacques Ramsay**. His long commitment to care quality and safety are sure to be a boon to the culture of quality we seek to nurture.



Léonie and Maryne, nursing interns from France

A special partnership to provide specialized bereavement counseling services was concluded with the Montreal Children’s Hospital’s Jeremy Rill Centre. The Lighthouse’s bereavement team now offers its services to families that have unexpectedly lost a child under the age of two.

Activities and Education is another area of activity. It refers to all the various activities organized for the children as well as our support workshops for parents and siblings. This year, noted artists graciously joined with us to work with the children on pieces of art, generously sharing their talent and experience to help the children develop to their full potential. We also added a new service that combined two complementary approaches into one—massage therapy and music therapy. Numerous benefits were observed, notably with regard to relaxation and relief.

The role of volunteers, who contribute so much to the quality and breadth of care at The Lighthouse, was also revisited and expanded into new areas. The caregiving team now has volunteers who work with the children in the pool. Training was also provided in safe patient handling techniques (SPHT).

Lastly, the Care and Services Department—The Lighthouse’s veritable nerve center—is constantly updating the care and services it provides by concluding new partnerships and creating new opportunities to show its commitment to the children and their families!

2016-2017

at a Glance

SERVICES AVAILABLE AT THE LIGHTHOUSE'S MAISON ANDRÉ-GRATTON

3,852
overnight
stays by children

88 %
occupancy rate*

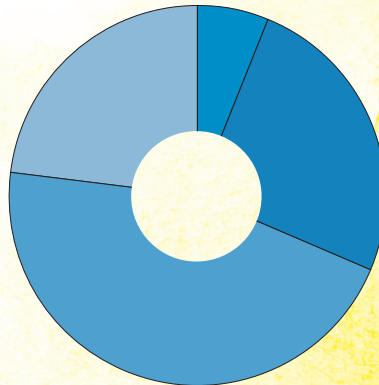
*Given the current occupancy rate, the Lighthouse can take in children at any time, whether because of an emergency or at end of life.

4.7
nights
(average length of stay)

814
total stays

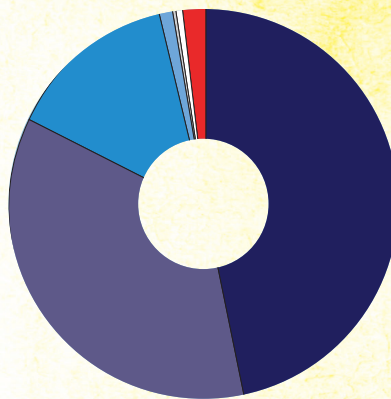
679
admissions
since Maison André-Gratton
opened in June 2007,
including
35 this year

PATIENT PROFILE



By age group

0-2 years :	6.25 %
3-5 years :	25.44 %
6-12 years :	45.53 %
13-18 years :	22.88 %

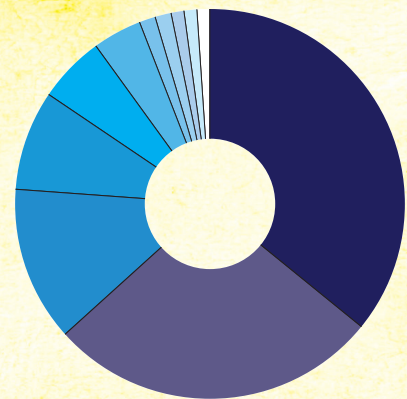


By referral = 224 children

Public social health sector	82.88 %
Teaching hospitals :	46.88 %
Other health institutions :	35.71 %

Other sector	15.62 %
Lighthouse Children and Families :	13.83 %
Not-for-profit organizations :	1 %
Clinics :	0.45 %
Agencies :	0.45 %

Education sector	1.79 %
Specialized schools :	1.79 %



Par région

Montréal :	35.71 %
Montréal :	28.13 %
Lanaudière :	12.5 %
Laval :	8.04 %
Estrie :	4.02 %
Laurentides :	4.02 %
Capitale-Nationale :	1.34 %
Mauricie et Centre-du-Québec :	1.34 %
Abitibi-Témiscamingue, Chaudière-Appalaches, Côte-Nord, Nord-du-Québec :	1.34 %
Saguenay-Lac-Saint-Jean :	1 %
Outaouais :	1 %

**EMPLOYEES
AND VOLUNTEERS**

24/7

medical team

65

employees

(care and services, activities and education, kitchen, maintenance, fundraising, communications, and administration)

1 568

training hours

provided to employees



14 589

**volunteer
hours**

932,5

training hours

(basic and ongoing) provided to volunteers

**FUNDRAISING
AND COMMUNICATIONS**

5 593

people made a donation to the Lighthouse



2 214 286 \$

collected through fundraising

1 130 708 \$

received in goods and services donations

755 000 \$

collected at the cocktail dinner party, a new record!

442

new birthday

participants following our
My Birthday as a Gift
fundraising campaign



69

activities organized

by third parties for the
UNITED for the Lighthouse
fundraising campaign

Boards and Committees:

Because They Care!

The Lighthouse Children and Families wishes to salute the commitment and dedication of the many board and committee members who give so generously of their time and expertise. Thanks to these volunteers from all walks of life, the Lighthouse can uphold the highest quality standards. THANK YOU for supporting the Lighthouse's cause with such conviction.

BOARD OF DIRECTORS

Chair

Jean-Daniel Brisson

President, Groupe conseil StratEXEC Inc.

Honorary Chair

Nicole Marcil-Gratton

Vice Chair and Treasurer

Marcel Martin

Regional Vice President, Gold Key Advisor Practices – Quebec and Eastern Ontario
Great-West Life Assurance Company

Directors

Dr. Maria Buithieu

Pediatric Diabetologist, Pediatric Department, Medical Director
CHU Sainte-Justine

Dr. Aurore Côté

Director, Network and Partnerships Program, Respiratory Medicine, Montreal Children's Hospital
McGill University Health Centre

Viviane Croux

Vice President and Region Head, TD Private Wealth Management

Isabelle Desmarais

Parent
Investigations Coordinator
Chambre de la Sécurité Financière

François Gratton

Executive Vice-President and President, Business Solutions East and TELUS Québec

Serge Lalonde

Counsel,
Dentons Canada LLP

Nicole Magnan

Management Consultant

Alain Miquelon

Senior Advisor
Champlain Financial Corporation

Paul Trihey

Executive Vice President, Global Sales and Marketing
Fusion BPO Services

Maxime Vandal

President
Les Ensembliers

Michèle Viau-Chagnon

Founder
The Lighthouse Children and Families

GOVERNING COUNCIL

Co-Presidents

Nicole Marcil-Gratton

Honorary Chair
The Lighthouse Children and Families

Michèle Viau-Chagnon

Founder
The Lighthouse Children and Families

Paul Desmarais jr.

Chair and Co-Chief Executive Officer
Power Corporation du Canada

Ginette Godin

Chair, 2010–2015 Fundraising Campaign
The Lighthouse Children and Families

Serge Godin

Founder and Executive Chair of the Board
CGI

François Gratton

Executive Vice-President, TELUS, and President, Business Solutions East, TELUS Québec

Eddie Leschiutta

Partner
Samson Bélair/Deloitte & Touche

L. Jacques Ménard

President, BMO Financial Group Quebec, Chair of the Board
BMO Nesbitt Burns

Andrew T. Molson

Chair of the Board
RES PUBLICA Consulting Group

Stéphane Quintal

Director of Player Safety
National Hockey League

Pierre Shedleur

Special Advisor
BDO Canada

Robert Tessier

Chair of the Board
Caisse de dépôt et placement du Québec

FUNDRAISING COMMITTEE

Louise-Marie Brousseau

Certified Corporate Director
ASC

Eve-Marie Cormier

Senior Advisor, Business Continuity
National Bank of Canada

Maxime Vandal

President
Les Ensembliers

The Lighthouse Children and Families Representatives

Johanne Desrochers

Chief Executive Officer

Céline Laberge

Director, Philanthropic Development and Communications

CERCLE DES DAUPHINS

Nicolas Archambault

Director and Content Producer

Éveline Brunet

Advisor, Intranet Content and Integration Management, Digital Marketing
National Bank of Canada

Eve-Marie Cormier

Senior Advisor, Business
Continuity
National Bank

Claudia Deschamps

Legal Advisor
SNC-Lavalin

Marc-Antoine Saroli

Regional Sales Manager,
SMB Business Solutions
TELUS

**CARE AND SERVICES
COMMITTEE****Dr. Maria Buithieu**

Pediatric Diabetologist,
Pediatric Department,
Medical Director
CHU Sainte-Justine

Dr. Aurore Côté

Director, Network and
Partnerships Program,
Respiratory Medicine
Montreal Children's Hospital,
McGill University Health
Centre

Isabelle Desmarais

Parent
Investigations Coordinator
Chambre de la Sécurité
Financière

**The Lighthouse
Children and Families
Representatives****Johanne Desrochers**

Chief Executive Officer

Hélène Lévesque

Care and Services Director

Annick Gervais

Family Coordinator

ETHICS COUNSELLOR**Franco A. Carnevale**

Ethicist, Psychologist, and
Nurse
McGill University, Montreal
Children's Hospital

**APPOINTMENT
COMMITTEE****Chair****Serge Lalonde**

Counsel
Dentons Canada LLP

Jean-Daniel Brisson

President
Groupe conseil
StratEXEC Inc.

**HUMAN RESOURCES
COMMITTEE****Chair****Nicole Magnan**

Management Consultant

Jean-Daniel Brisson

President
Groupe conseil
StratEXEC Inc.

Lucie Gérin

Director of Human Resources
Moisson Montréal

Michael Lavoie

(April 2016 to February 2017)
Partner, Octave Mæcenat,
Recrutement & conseils,
General Partnership

Eve-Marie Maletto, CRHA

Senior Advisor, HR and OD
Consulting Services
CHU Sainte-Justine

Linda Young

Human Resources Coordinator
Swagelok Quebec Group

**The Lighthouse
Children and Families
Representatives****Johanne Desrochers**

Chief Executive Officer

Nicole Blanchette

(April to September 2016)
Human Resources
Coordinator

Ginette Leduc

(since September 2016)
Human Resources
Coordinator

OMBUDSWOMAN**Nadine Mailloux**

Ombudswoman, City of Laval

**AUDIT AND RISK
MANAGEMENT
COMMITTEE****Chair****Marcel Martin**

Regional Vice President,
Gold Key Advisor Practices –
Quebec and Eastern Ontario
Great-West Life Assurance
Company

Jean-Daniel Brisson

President
Groupe conseil StratEXEC
Inc.

Viviane Croux

Vice President and Region
Head
TD Private Wealth
Management

Pierre Vallerand

Partner
Raymond Chabot
Grant Thornton

**The Lighthouse
Children and Families
Representatives****Johanne Desrochers**

Chief Executive Officer

Suzanne Douville

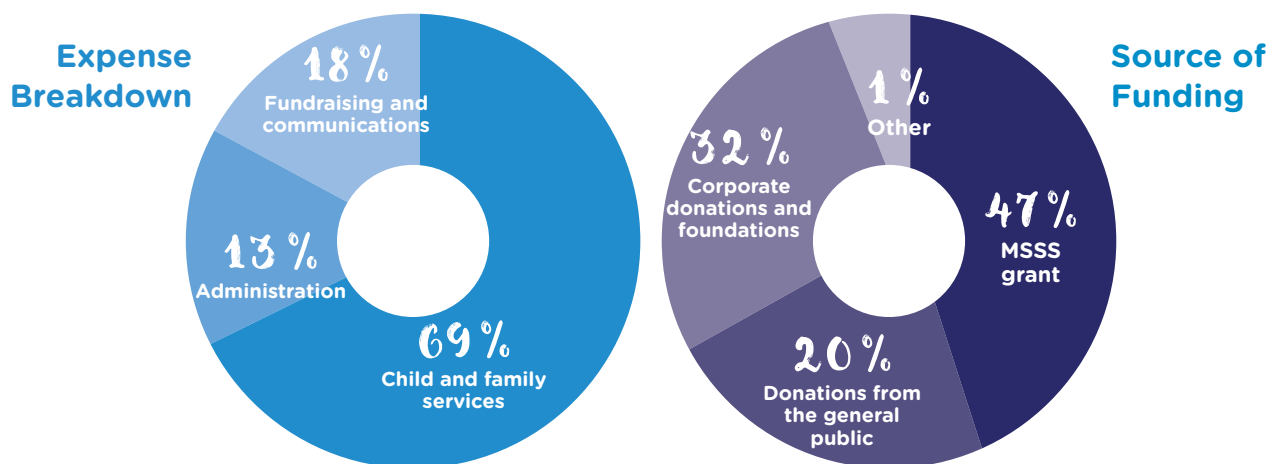
Director of Finance

Financial Results

2016-2017

A Shared Effort to Improve Access to Pediatric Palliative Care

Thanks to the trust and generosity of our donors and funders, The Lighthouse Children and Families ended fiscal 2016-2017 with total revenue of over **\$4.5 million**, excluding in-kind donations of goods and services. This revenue once again served to deliver high quality services to children in need of palliative care, as well as respite and support for their families.



All Lighthouse services are free. The Quebec Health and Social Services Ministry and its health network partners fund nearly half of operating costs. Generous Lighthouse donors and partners make up the **52%** difference.

In all, The Lighthouse received **5,593 donations** in 2016-2017 from foundations, businesses, and members of the general public. This provided over **\$2.2 million** in financial support to ensure that seriously ill children enjoy life right to their very last day.

Corporate Donations and Foundations

Over **\$1.3 million** was collected in 2016-2017 from corporate donors and foundations. This vital support brings happiness into the too-short lives of children at The Lighthouse and soothes families in their daily struggle with illness.

Dons mensuels

Monthly donors offer the valuable gift of a stable source of revenue. The impact of their giving is felt throughout the year.

In 2016-2017 the number of monthly donors rose **41%**, a giant step forward that pays dividends every month in the form of care for more families.

Over time, these donations add up to a huge contribution to our organization.

Testamentary Giving

Leaving a gift to The Lighthouse in your will is a legacy for tomorrow. Our sincerest thanks to all those who have chosen to open their hearts and provide such essential support for the future.

UNIS pour le Phare

UNITED for the Lighthouse is a campaign where the community helps organize Lighthouse fundraising activities. This year, we raised **\$130,293** thanks to **69 activities** organized by third parties, such as individuals, groups, or companies.

unispourlephare.com

The Lighthouse Grandparents' Circle

The Lighthouse Grandparents' Circle was new in 2016-2017. Its goal is to introduce The Lighthouse to people 55 and over so that they too can help by donating money, donating time, or simply telling others about The Lighthouse. To date, "Discover The Lighthouse" activities have provided a first-hand look at our facility to **52** new people.

A warm 'thank you' to the members of the Grandparents' Circle Committee for their dedication to the cause and for inviting their many friends and neighbors to learn more about us!



Richard Riopel, Pierre Duceppe, Rémi Gagnon, Suzanne Douville, Michèle Viau-Chagnon, Andrée Fortin, Madeleine Thuot, Francine Tousignant, Monique Morin. Not pictured: Claudette Léger-Gauthier.

The Donor with a Big Heart

For nearly a decade Michel Poirier has been taking part in fundraising drives and events for The Lighthouse. He knows just how valuable The Lighthouse is for gravely ill children and their families.

Recently Michel began to wonder how he could do more for those he would leave behind after his death. So when he drew up his last wishes, he included a testamentary gift to The Lighthouse. He has great faith in the organization and is committed to its mission, and he knew in his heart that the money would be spent in the best interests of the children and their families.

Michel's message to others is that testamentary giving is not just for rich people. Any gift, however big or small, is important to The Lighthouse and brings hope to children and families. As he points out, our goods and possessions will not follow us into the afterlife, so Michel urges all those who share his love of The Lighthouse to consider how they too can leave a legacy.



Michel Poirier, a great friend of The Lighthouse

Cocktail annuel

The Lighthouse broke another record this year, collecting **\$755,000** at its 16th annual cocktail reception under the co-presidents of honor **Sophie Desmarais, Bernard Poliquin** (senior vice president, Ivanhoé Cambridge), and **Martin Thibodeau** (president, Quebec Division, RBC Royal Bank), supported by a team of 27 patrons of honor.

A very successful evening in the company at the talented **Patrick Langlois** as emcee and actor **Guyline Tremblay**, who very generously and tenderly shared stories about the children at The Lighthouse.

In a first this year, artwork created by children at The Lighthouse in collaboration with such noted artists as **Bernard Séguin Poirier, Armand Vaillancourt, and Jean-Daniel Rohrer** was included in the silent and live auctions, to the delight of the art lovers in attendance.

cocktailduphare.com



Young Donors' Circle

For a second consecutive year, our Young Donors' Circle contributed directly to the visibility and fundraising success of The Lighthouse Children and Families. This committee of engaged and energetic young business leaders attracted the attention and financial support of a new generation of donors by organizing fundraising events, including a Summer Cocktail Party at Marché Jean-Talon. The committee raised a total of **\$30,986** for The Lighthouse in 2016-2017.



Elisa Clavier (McCarthy Tétrault), Nicolas Archambault (Director and Content Producer), Olivier Coche (National Bank Financial), Tifanie Brazier (TELUS), Évelyne Brunet (National Bank of Canada), Claudia Deschamps (SNC-Lavalin Inc.), Marc-Antoine Saroli (TELUS), and Eve-Marie Cormier (National Bank of Canada)



La lumière du cœur, a work created by the children of The Lighthouse in collaboration with Jean-Daniel Rohrer

Santa's Calling Campaign

The Santa's Calling campaign had a record year with \$34,765 in donations received. Over **300 children** experienced the joy of getting a call from Santa or had the privilege of a VIP invitation to meet famous Old Saint Nick in person.

leperenoelmappelle.com

My Birthday as a Gift

My Birthday as a Gift, the general public fundraising campaign of The Lighthouse Children and Families, met with great success in 2016-2017 with **442 celebrants**, **3,540 donors**, and a total of **\$187,835** raised during the year.

When you give your birthday as a gift, you ask friends, family, and colleagues to donate to The Lighthouse in honor of your birthday—a much more significant way to celebrate this annual event. Thank you to all our celebrants who gave their birthdays as gifts of joy to the sick children at The Lighthouse.

Thank you too to all the personalities who, in addition to collecting donations for the children, used their star power to draw attention to The Lighthouse.

mafeteencadeau.com



Philippe Bond at The Lighthouse accompanied by Mickael

"I was really very touched by my visit to the facility, especially the chance to meet the children. You could just feel all the life and energy in the staff and the whole place."

- **Philippe Bond**



Simon-Olivier Fecteau visiting The Lighthouse

"I raised money for The Lighthouse, but in reality they were the ones who helped me, because doing something for such an important cause gives you an incredible feeling of self-worth, like you're really doing good."

- **Simon-Olivier Fecteau**



Stéphane Laporte with auxiliary nurse Julien and patient care attendants Elizabeth and Monique

"Just because the future is dark doesn't mean the present can't be bright. Quite the opposite, you have to treasure every moment. That's what they do at The Lighthouse."

- **Stéphane Laporte**

Donors of Goods and Services

In addition to cash donations, The Lighthouse received numerous gifts of goods and services from partners, substantially reducing its operating costs.

In advertising, such help is vital to ensuring The Lighthouse gets the broad exposure it needs. Once again this year, The Lighthouse's TV and radio commercials were broadcast free on the major networks.

The value of this advertising amounted to over **\$1.1 million** over the year.

*On behalf of the children
and families at The
Lighthouse, Thank you!*

Thank You to Our Donors

The Lighthouse wishes to express its heartfelt and unending gratitude to each of its donors, sponsors, and partners. Thank you for choosing The Lighthouse, for believing in The Lighthouse, and for carrying the cause like a bright and luminous torch for all to see. Your trust in The Lighthouse is what permits us to move forward, to create, and to build.

\$100,000 and over

Bell Media, Quebec
Corus Media Inc.
Gratton, Robert
Great-West Life Assurance Company
Marcelle et Jean Coutu Foundation

\$50,000 to \$99,999

Camden
Desmarais, Sophie
Investors Group
Mirella & Lino Saputo Foundation
Oxygène Événements
Pathy Family Foundation
RBC Royal Bank of Canada
TVA Group

\$10,000 to \$49,999

André Gauthier Foundation
Autonne, Marie-Pier
Bell Canada
Blue Storm Media Inc.
BMO Bank of Montreal
Bombardier Aerospace
Bombardier Aerospace Employees' Charitable Fund
Bunny Williams inc.
Cinéma Guzzo
CN
Cogeco Inc.
Corpora Inc.
Croux, Viviane
CST Foundation
DoubleV Inc.
Edelman
Étoile de Martin Foundation
Galerie Simon Blais
Gaz Metro
Google Inc.
Groupe Robert Inc.
Groupe Serdy
Hydro-Québec
Ivanhoé Cambridge
J. Armand Bombardier Foundation
J.-Louis Lévesque Foundation
L'Aubainerie Foundation
LC Entrepreneurs Généraux (2000) Ltée

Les meubles de siècle en siècle inc.
Magnus Poirier
Métromédia CMR Plus
Mike and Valeria Rosenbloom Foundation
National Bank of Canada
Poirier, Michel
Power Corporation du Canada
René Malo Foundation
R. Howard Webster Foundation
SAQ
Scotiabank
Simple Plan Foundation
Société Radio-Canada
Sœurs des Saints Noms de Jésus et Marie
St-Hubert Foundation
TD Bank
TELUS
Trottier Family Foundation
TV5

\$1,000 to \$9,999

Affinerie CCR - A Glencore Company
Air Canada
Ali Khalil, Muhammad
Alice and Euphemia Stewart Family Foundation
Alithya
ALLB Inc.
AlphaFixe Capital
Altus Group
Amgen Canada
Angèle Dubeau & la Pietà
Anglocom
Anjinnov Construction
Ariane Riou et Réal Plourde Foundation
ARPAC Foundation
Aslon
Association SGB
Atelier Stone Age
Ateliers Bolduc et Frères
Bannerman Family Foundation (The)
Baril, André
BCF s.e.n.c.r.l.
Beauregard, Pascale
Beausoleil, Frédéric
Bellemare Studio
Belley Électrique

Benamron, Samuel
Biason, Lorena
Birks
Birks Family Foundation
Biron Groupe Santé
Blain, Bernadette
Blain, François
Blain, Joyal, Charbonneau
Blitz Design Ébénisterie architectale
Bombardier, J.R. André
Bourassa Savaria Foundation
Bourdeau, Sylvie
Bourré, Jean-Sébastien
Brault & Martineau Foundation
Brien, Andrée
Bristol-Myers Squibb Canada
Broue-Alliance
Cadillac Fairview Corporation Ltd.
CAE
Café Barista
Caisse de dépôt et placement du Québec
Canadian Gem
Carreiro, Carlos
Cefai, Sadri
Celadon Collection
Cenedese, Hélène
Céramique Rive-Sud
Chagnon, Fanny
Chagnon, Isabelle and Philippe Demers
Champagne, Manon
Chaput, Jocelyne
CHEF 99.9 fm
CHOI 98.1, Radio X
Cinélande & Associés
Cisco Systems Canada Co.
CKAJ fm 92.5
Clermont, Benoît
Club LaCité
Cole Foundation (The)
Collège Ahuntsic
Contrat-Sol Couvre-planter
Convectair
Corporation d'investissement Sanpalo
Costco Wholesale Canada
Dalphond, Claude
Datsit Studios
David H. Laidley Foundation (The)

Denise et Guy St-Germain Foundation
Deschênes Group
Desjardins
Desrochers, Carole
Desrochers, Johanne
Develocan Management
DLGL Technologies Corporation
Dubé, Pauline
Dutrisac, André
El-Gadi, Nisreen
Encadrement Marcel
Environnement Électronique
Épisode Inc.
Ergogrip
Eric T. Webster Foundation
Fabmétel
Fasken Martineau DuMoulin
Fayolle Canada
Fiera Private Lending
Fondation de la Corporation des Concessionnaires d'automobiles de Montréal
Fondation du Grand Montréal/Katharine Pearson Tribute Foundation
Fontaine Hébert, Chantal
Forget, Daniel
Forget, Stéphane
Fortier, Yannick
Fortin, Andrée
FPI Cominar
Gagner, Pascal
Gagnon, Nathalie
Galerie de Bellefeuille
Gallant, D.
Garderie éducative l'Alpha à l'Oméga
George Hogg Family Foundation
Gestion Deloitte S.E.C.
GILM - Le Groupe Maurice
Gosselin, Simon
Government of Québec, Ministre de l'Éducation, du Loisir et du Sport
Gris de bois
Groupe Desgagnés
Groupe Gaudet
Groupe Gaviko
Groupe RDVIE
Groupe Ressource des Moulins
Guillevin International
Guizzetti, René

Gustav Levinschi	Lesage, Martin	Osler, Hoskin & Harcourt LLP	Shak, Perry
Guy Hamelin Foundation	Leti, Guillaume	Otéra Capital	Sibylla Hesse Foundation
Gym Studio Locomotion	Lévesque, Hélène	Ouellette, Pascal	Signature Pro
Habitation Solano II	Loblaws Angus	Pacart Québec	SIICUSM
Hamel, Carole	Lombardi, Antonio	Panasonic Canada	Simard, Pierre
Hay Foundation (The)	Loto Québec	Papadimitriou, James	SIR Solutions
Hétu, Patrick	LPi Communications Group	Paquin, Louiselle	SMS Equipment
H. Lalonde & Frère	Maçonnerie Sutton (2006)	Park Avenue Lexus Sainte-Julie	SNC-Lavalin
Ingenia Technologies	Macpek Inc.	Paul A. Fournier Foundation	Starcom Mediavest Group
Investissement Québec	Magnan, Nicole	Peinture et pièces d'auto D.R.	STC Acoustique
Irving Mitchell Kalichman	Maher, Sylvain	Pellerin, Marie-Pierre	Ste-Marie, Micheline
Jacqueline Lallemand Trust	Mainlab Technologies	Perreault, Diane	Studios QMD Association
Jean Coutu Group	Maison Corbeil	Perreault, Fernand	Sun Life Financial
Jean-Guy Larin Trust	Maitre et Chef Traiteur	Perspective psychologie organisationnelle	Syndicat du Personnel de la CDEC Rosemont-Petite-Patrie
Jewish Community Foundation of Montreal	Malalla, Joseph	Pfister, François	Teknion Roy & Breton
JTI MacDonald Corp.	Manulife Financial	Philipps, Karine	Télé Publique Deux
J.W. McConnell Family Foundation	Marcil-Gratton, Nicole	Picory, Francis	Télé-Québec
Kildair Service ULC	McCarthy Tétrault	Pixocreation	Tessier, Claude
Kravet Inc.	McGill University and Génome Québec Innovation Centre	Plamondon, Luc	Tino Carrara
La Luz Portraits	Merciii	PNG Projets d'aménagements inc.	TNG Corporation
Laberge, Anne-Marie	MétéoMédia	Quebecor Media Inc.	Transat Tours Canada/Air Transat
Laberge, Céline	Michel Bernard Foundation	Radio CHGA-FM 97.3	TransCanada PipeLines
Laflamme, Karen	Mileva, Luiza	Ramsay, Jacques	Transforce Income Fund
Lallemand Inc.	Military and Hospitaller Order of St Lazarus (The)	Ratelle, Manon et Réjean	Tremblay, Yanik
Lamarre, Jean et Diane Fugère	Mini-Excavation Beloeil	Raymond Chabot Grant Thornton	Trempe, Evelyn
Laporte, Stéphane	Miron, Mélissa	Red Carpet & Rug Co.	Trihey Financial Group
L'Aréna des Canadiens Inc. - Division Evenko	Mon Préféré	Reinhardt, Michel	Trinh, Ba Truc
Laroche, Thérèse	Montpetit, Denis	Résidence Les Marronniers	Trispec Communications
Larocque, Amélie	Montreal Port Authority	R. Fabi, Jean	UBS Bank
Lasik MD	Moreault, Patrick	Robillard, Claude	Vachon, Luc
Le Bonhomme à lunettes	Morin, François L.	Rose ou Bleu	Vaillant, Jean-René
Le Caius du livre	Morin, Louise	Roy, Andrée	Valeant Canada
Leclerc Communication	Morissette Caron, Mélanie	RTI 911	VéronikaH
Fuller Landau Group	Montreal Museum of Fine Arts	Sanimax San Inc.	VIA Rail Canada
Les Centres d'achats Beauward	MQ Windows	Saputo Inc.	Viau-Chagnon, Michèle
Les Ensembliers	National Public Relations	Sarrazin Plourde	Voynaud, Judith
Les Entreprises de réfrigération LS	Néron, Caroline	Savard, Guy	WC Hanna Medicine Professional Corporation
Les Entreprises Revalax	Nézet-Séguin, Yannick	Savard, Louis	Westgrove
Les Pavages Chenail	Nishi Pearls	Schlader, Thomas et Marie Woods	Xodan Conseil
Les Planchers en Béton Fariz	Nivoex	Scott, Gabriel	Zeller Family FoundationXodan Conseil inc.
Les productions Folifola	Normand, André	Séguin, Daniel	Zeller Family Foundation
Les Services Ménagers Roy	Norman Fortier Foundation	Séguin Poirier, Bernard	
Les Soeurs de la Présentation de Marie	Opération Enfant Soleil	Sextans internet	
	Optimum Talent		
	Orphisme Photo Design		

IN MEMORIAM DONATIONS

Merci à ceux et celles qui ont choisi d'honorer la mémoire d'un être cher en faisant un don au Phare Enfants et Familles.

In memory of: Audréanne Tremblay, Carl-Vincent Kerr, Carmen Guérin-Tanguay, Charles-Élie Bassal, Dr Denis Bédard, Dr Michel Vanasse, Édouard Soueidan, Eva C., Fenley Emmanuel Dorsainvil, Flora Matzat, Jacques Martel, Jean Marcotte, Jean-Pierre Filion, Jerry Riopel, Jonathan Chayer, Lise Leprohon, Loïc Paquette, Louis-Ralph-Philippe Lachapelle, Luc Dinelle, Marie-Ange Forest, Marius Gauvin, Mathis, Olivier Dion, Olivier Legault, Patrick, Philou, Pierre Savoie, Rachel, Richard Dumont, Suzanne Grisé, Vincent St-Pierre, Yvon Émond.

NOTE

This is a list of donors from the last fiscal year, April 1, 2016, to March 31, 2017. It includes those who donated goods and services as well as 2016-2017 payments from multiyear donations. Much effort has been made to ensure accuracy. However if your name or your company's name has been omitted or misspelled, please accept our apologies and let us know so that we can update our files accordingly.

Credits

Graphic design

Gracieuseté de Claudine Pinel, Pixocreation

Rédaction

Donated by Mélanie Dugré
(portraits of Maélie and Loïc)

The Lighthouse Children and Families

Révision

Annie Dubé, Andrée Fortin, and
Madeleine Thuot, Lighthouse volunteers

The Lighthouse Children and Familie

Traduction

Gracieuseté d'Anglocom

Photographie

Donated by Mikaël Theimer and Vanessa Cyr

The Lighthouse Children and Families



Alexia during a stay at The Lighthouse



The Lighthouse
Children and Families

Living life to the fullest

2725, avenue du Mont-Royal Est
Montreal, Quebec H1Y 0A1

Inquiries: 514-954-4848

Toll free: 1-866-954-4848

Donations: 514-789-4009

info@phare-lighthouse.com

phare-lighthouse.com

 facebook.com/PhareEnfantsFamilles

 twitter.com/LePhareORG